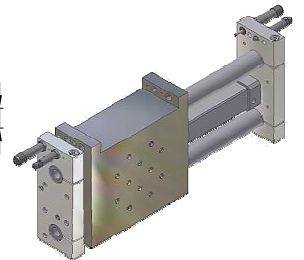
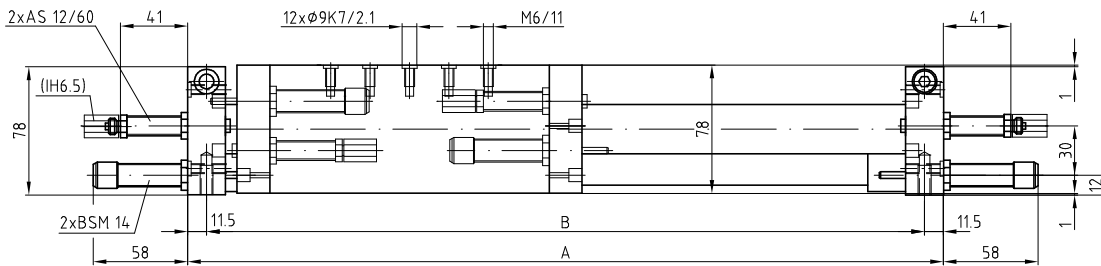
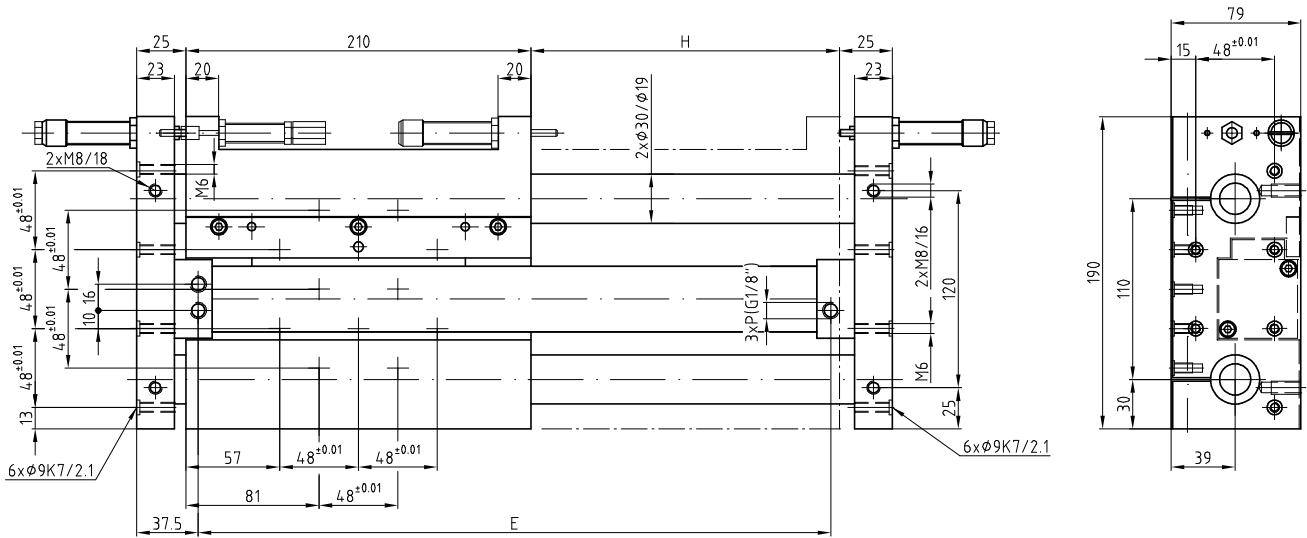


Linear-Element GLE/B 25

Élément linéaire GLE/B 25

Unità lineare GLE/B 25

Linear element GLE/B 25



P=Luftanschluss G1/8"

P=Raccord d'air G1/8"

P=Raccordi pneumatici G1/8

P=Air connections G1/8"

Typ	Type	GLE/B 25-200	GLE/B 25-300	GLE/B 25-400	GLE/B 25-500	GLE/B 25-600	GLE/B 25-800	GLE/B 25-1000
Typ	Type							
Artikelnummer	No d'article	1000036	1000037	1000038	1000039	1000040	1000042	1000044
Codice No.	Reference No.							
Nennub H	Course H	200 mm	300 mm	400 mm	500 mm	600 mm	800 mm	1000 mm
Corsa H	Stroke H							
Mass A	Dimension A	460 mm	560 mm	660 mm	760 mm	860 mm	1060 mm	1260 mm
Dimensione A	Dimension A							
Mass B	Dimension B	437 mm	537 mm	637 mm	737 mm	837 mm	1037 mm	1237 mm
Dimensione B	Dimension B							
Mass E	Dimension E	385 mm	485 mm	585 mm	685 mm	785 mm	985 mm	1185 mm
Dimensione E	Dimension E							

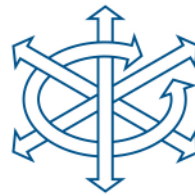
Sonderausführungen auf Anfrage Constructions particulières sur demande Esecuzioni speciali su richiesta Special types on request

Zubehör finden Sie auf den Seiten 2.73, 6.1

Vous trouvez des accessoires aux pages 2.73, 6.1

Per gli accessori, vedi alle pagine 2.73, 6.1

You will find accessories on pages 2.73, 6.1



Technische Daten

Données techniques

Dati tecnici

Technical data

Typ	Type	GLE/B 25-200	GLE/B 25-300	GLE/B 25-400	GLE/B 25-500	GLE/B 25-600	GLE/B 25-800	GLE/B 25-1000
Artikelnummer	No d'article	1000036	1000037	1000038	1000039	1000040	1000042	1000044
Codice No.	Reference No.							
Nennhub H	Course H	200 mm	300 mm	400 mm	500 mm	600 mm	800 mm	1000 mm
Corsa H	Stroke H							
max. Nutzgewicht=m	Charge utile max. =m	70 kg	70 kg	70 kg	60 kg	50 kg	35 kg	25 kg
Carico utile max. =m	Max. useful load=m							
Kolbenkraft einfahrend	Force du piston rentrant	220 N	220 N	220 N	220 N	220 N	220 N	220 N
Forza di riendo	Piston force retracted	(5 bar)	(5 bar)	(5 bar)	(5 bar)	(5 bar)	(5 bar)	(5 bar)
Kolbenkraft ausfahrend	Force du piston sortant	220 N	220 N	220 N	220 N	220 N	220 N	220 N
Forza di uscita	Piston force extended	(5 bar)	(5 bar)	(5 bar)	(5 bar)	(5 bar)	(5 bar)	(5 bar)
Betriebsdruck	Pression d'air	3 – 8 bar	3 – 8 bar	3 – 8 bar	3 – 8 bar	3 – 8 bar	3 – 8 bar	3 – 8 bar
Pressione aria	Working pressure							
Luftanschlüsse (P)	Raccords d'air (P)	G 1/8"	G 1/8"	G 1/8"	G 1/8"	G 1/8"	G 1/8"	G 1/8"
Raccordi pneumatici (P)	Air connectors (P)							
Luftverbrauch/H	Consommation d'air/H	0.8 NL	1.2 NL	1.6 NL	2.0 NL	2.4 NL	3.2 NL	4.0 NL
Consumo aria/H	Air consumption/H							
Temperaturbereich	Ecart de température	-10% +60°C	-10% +60°C	-10% +60°C	-10% +60°C	-10% +60°C	-10% +60°C	-10% +60°C
Gamma di temperatura	Temperature range							
Gewicht	Poids	11.3 kg	12.2 kg	13.1 kg	14.1 kg	14.9 kg	16.7 kg	18.5 kg
Peso	Weight							
Wiederholgenauigkeit	Reproductibilité	±0.01 mm	±0.01 mm	±0.01 mm	±0.01 mm	±0.01 mm	±0.01 mm	±0.01 mm
Ripetibilità	Repeating accuracy							
Einbaulage (beliebig)	Position de montage (à volonté)							
Posizione di montaggio (a volontà)	Any given position (any)							

Lieferumfang:	Matériel livré:	Ambito di fornitura:	Items supplied:
2 Anschlagschr. AS 12/60	2 Vis d'arrêt AS 12/60	2 Viti d'arresto AS 12/60	2 Stop screws AS 12/60
2 Stossdämpfer BSM 14	2 Amortisseurs BSM 14	2 Ammortizzatori BSM 14	2 Shock absorbers BSM 14
2 Positionierringe	2 Bagues de positionnement	2 Anelli di posizionamento	2 Positioning rings

Taktzeit
Messungen bei 5 bar

Temps de cycle
Mesuré à 5 bar

Tempo di ciclo
Misurato con 5 bar

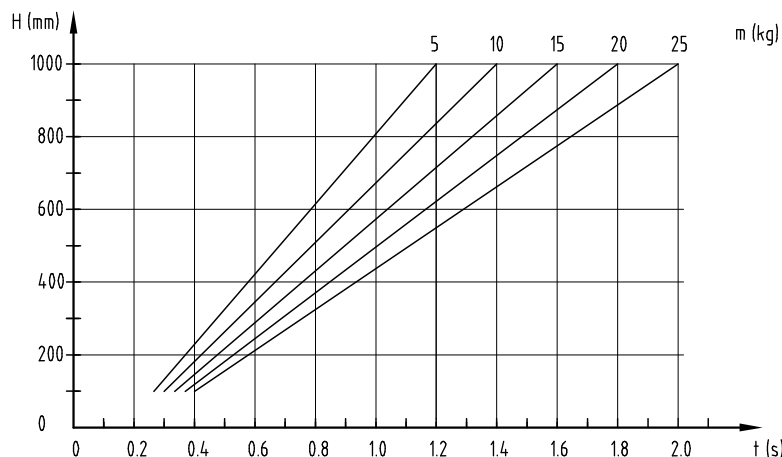
Cycle time
Measurements at 5 bar

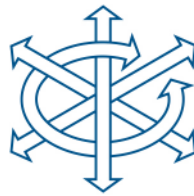
m=Mass [kg]
t = Hubzeit [s]

m=Mass [kg]
t = Temps par course [s]

m=Massa [kg]
t = Tempo di corsa [s]

m=Mass [kg]
t = Stroke time [s]





Zubehör GLE/B 25

Accessoires GLE/B 25

Accessori GLE/B 25

Accessory GLE/B 25

Verbindungsplatte

Plaque de raccordement

Piastra di collegamento

Connecting plate

4000035

Lieferumfang:

2 Positionierringe

8 Schrauben M6x20

Matériel livré:

2 Bagues de positionnement

8 Vis M6x20

Ambito di fornitura:

2 Anelli di posizionamento

8 Viti M6x20

Items supplied:

2 Positioning rings

8 Screws M6x20

