

### Technische Daten

### Données techniques

### Dati tecnici

### Technical data

Typ	Type	Tipo	Type	LES 16-30	LES 16-60	LES 16-90
Artikelnummer	No d'article	Codice No.	Reference No.	1000001	1000002	1000003
Nennhub H	Course H	Corsa H	Stroke H	30 mm	60 mm	90 mm
Max. Nutzgewicht=m	Charge utile max.=m	Carico utile max.=m	Max. useful load=m	5 kg	5 kg	4 kg
Kolbenkraft einfahrend	Force du piston rentrant	Forza di rientro	Piston force retracted	78 N (5 bar)	78 N (5 bar)	78 N (5 bar)
Kolbenkraft ausfahrend	Force du piston sortant	Forza di uscita	Piston force extended	90 N (5 bar)	90 N (5 bar)	90 N (5 bar)
Betriebsdruck	Pression d'air	Pressione aria	Working pressure	3-8 bar	3-8 bar	3-8 bar
Luftanschlüsse (P)	Raccords d'air (P)	Raccordi pneumatici (P)	Air connectors (P)	M5	M5	M5
Luftverbrauch/Hub	Consommation d'air/course	Consumo aria/corsa	Air consumption/stroke	0.030 NL	0.060 NL	0.090 NL
Temperaturbereich	Ecart de température	Gamma di temperatura	Temperature range	-10°/+60 °C	-10°/+60 °C	-10°/+60 °C
Gewicht	Poids	Peso	Weight	0.5 kg	0.8 kg	1.1 kg
Wiederholgenauigkeit	Reproductibilité	Ripetibilità	Repeating accuracy	± 0.01 mm	± 0.01 mm	± 0.01 mm
Einbaulage (beliebig)	Position de montage (à volonté)	Posizione di montaggio (a volontà)	Any given position (any)			

#### Lieferumfang:

2 Anschlagschr. AS 08/25  
2 Stossdämpfer SD 08  
2 Positionierringe

#### Matériel livré:

2 Vis d'arrêt AS 08/25  
2 Amortisseurs SD 08  
2 Bagues de positionnement

#### Ambito di fornitura:

2 Viti d'arresto AS 08/25  
2 Ammortizzatori SD 08  
2 Anelli di posizionamento

#### Items supplied:

2 Stop screws AS 08/25  
2 Shock absorbers SD 08  
2 Positioning rings

#### Taktzeit

Messungen bei 5 bar

m=Masse [kg]  
t = Hubzeit [s]

#### Temps de cycle

Mesuré à 5 bar

m=Masse [kg]  
t = Temps par course [s]

#### Tempo di ciclo

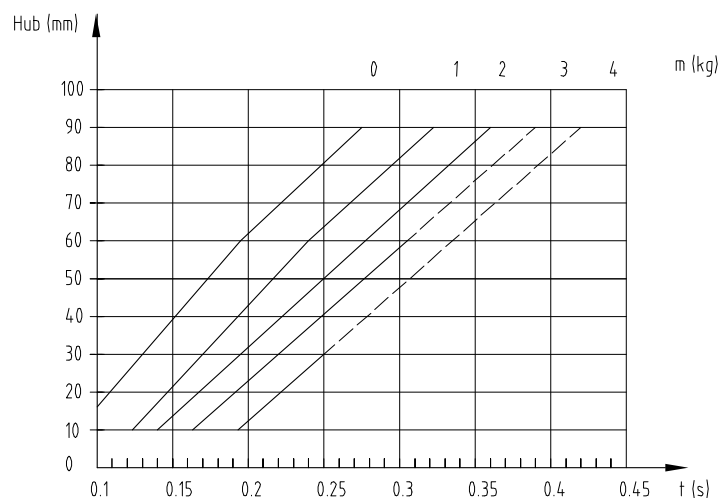
Misurato con 5 bar

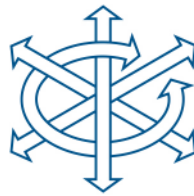
m=Massa [kg]  
t = Tempo di corsa [s]

#### Cycle time

Measurements at 5 bar

m=Mass [kg]  
t = Stroke time [s]



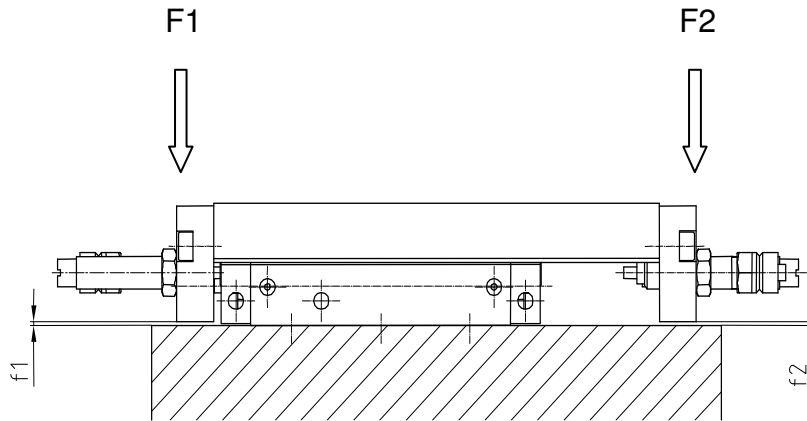


### Durchbiegung

### Fléchissement

### Deflessione

### Deflection



LES 16-30		
F1 / F2	f1	f2
10 N	0	0.012
20 N	0	0.020
30 N	0.005	0.030
40 N	0.008	0.035
50 N	0.010	0.050

LES 16-60	
f1	f2
0	0.020
0	0.050
0.005	0.080
0.008	0.100
0.010	0.130

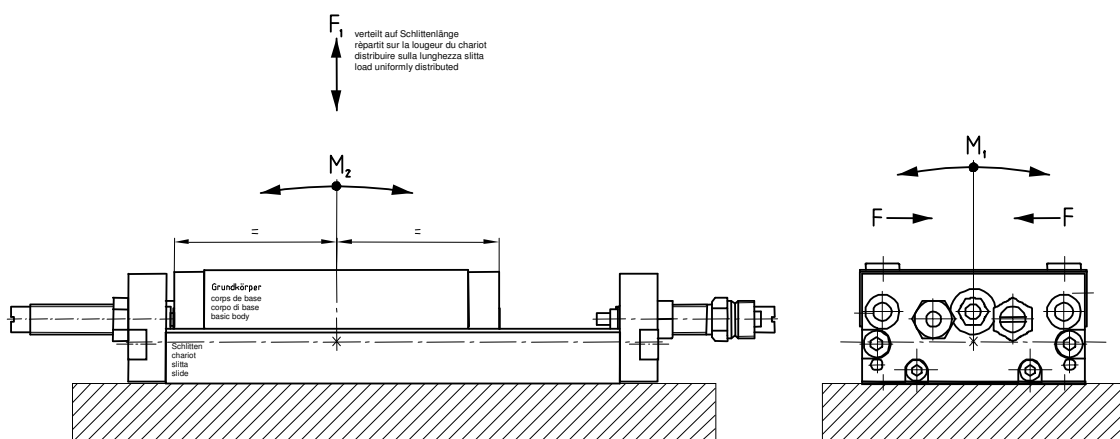
LES 16-90	
f1	f2
0	0.065
0	0.110
0.005	0.170
0.008	0.210

### Moment

### Moment

### Momento

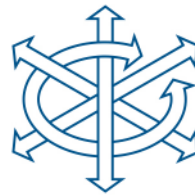
### Moment



LES 16-30		
F1	M1	M2
1590 N	10 Nm	11 Nm

LES 16-60		
F1	M1	M2
1590 N	10 Nm	15 Nm

LES 16-90		
F1	M1	M2
1590 N	10 Nm	22 Nm



### Zubehör LES 16

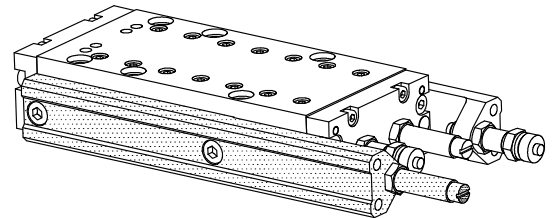
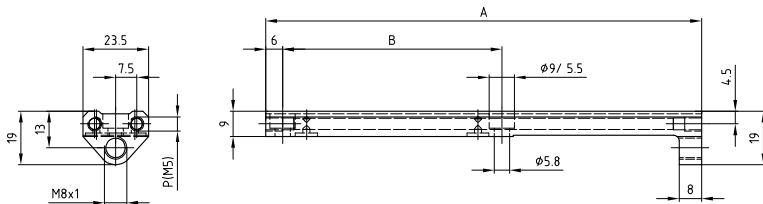
### Accessoires LES 16

### Accessori LES 16

### Accessory LES 16

Anschlagwinkel	Butée d'angle	Angolo di arresto	Stop L-bar	LES 16-30	LES 16-60	LES 16-90
Artikelnummer	No d'article	Codice No.	Reference No.	4000001	4000002	4000003
Mass A	Dimension A	Dimensione A	Dimension A	145 mm	205 mm	265 mm
Mass B	Dimension B	Dimensione B	Dimension B	78 mm	108 mm	138 mm
Gewicht	Poids	Peso	Weight	0.060 kg	0.090 kg	0.120 kg

Lieferumfang:	Matériel livré:	Ambito di fornitura:	Items supplied:
2 Schrauben M5x12	2 Vis M5x12	2 Viti M5x12	2 Screws M5x12
1 O-Ring 12x1.5	1 Joint torique 12x1.5	1 Angelo toroidale 12x1.5	1 O-ring 12x1.5



Verbindungsplatte	Plaque de raccordement	Piastra di collegamento	Connecting plate	4000063
-------------------	------------------------	-------------------------	------------------	---------

Lieferumfang:	Matériel livré:	Ambito di fornitura:	Items supplied:
2 Positionierringe	2 Bagues de positionnement	2 Anelli di posizionamento	2 Positioning rings
2 Schrauben M6x16	2 Vis M6x16	2 Viti M6x16	2 Screws M6x16
2 Schrauben M4x30	2 Vis M4x30	2 Viti M4x30	2 Screws M4x30

