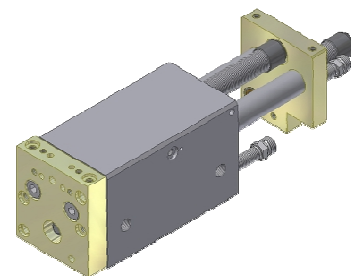
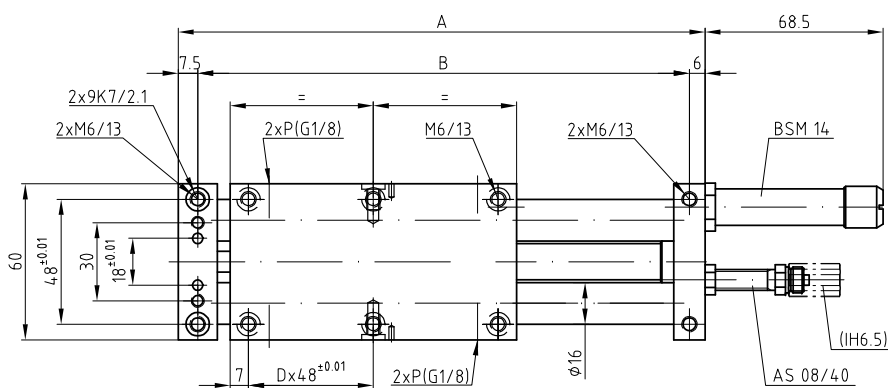
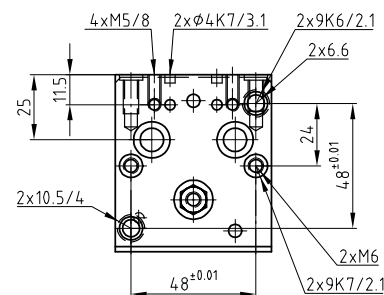
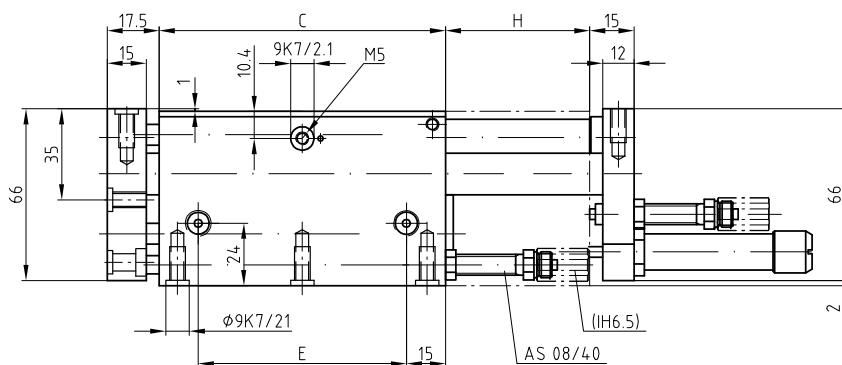


## Linear-Element LE 25

## Élément linéaire LE 25

## Unità lineare LE 25

## Linear element LE 25



P=Luftanschluss G1/8

P=Raccord d'air G1/8

P=Raccordi pneumatici G1/8

P=Air connections G1/8

Typ	Type	Tipo	Typ	LE 25-60	LE 25-120	LE 25-200
Artikelnummer	No d'article	Codice No.	Reference No.	1000023	1000024	1000025
Nennhub H	Course H	Corsa H	Stroke H	60 mm	120 mm	200 mm
Mass A	Dimension A	Dimensione A	Dimension A	202.5 mm	322.5 mm	482.5 mm
Mass B	Dimension B	Dimensione B	Dimension B	189.0 mm	309.0 mm	469.0 mm
Mass C	Dimension C	Dimensione C	Dimension C	110.0 mm	170.0 mm	250.0 mm
Mass Dx48	Dimension Dx48	Dimensione Dx48	Dimension Dx48	1	2	4
Mass E	Dimension E	Dimensione E	Dimension E	80.0 mm	140.0 mm	220.0 mm

Sonderausführungen auf Anfrage

Constructions particulières sur demande

Esecuzioni speciali su richiesta

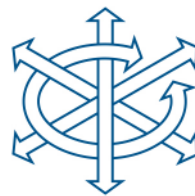
Special types on request

Zubehör finden Sie auf den Seiten 2.33, 6.1

Vous trouvez des accessoires aux pages 2.33, 6.1

Per gli accessori, vedi alle pagine 2.33, 6.1

You will find accessories on pages 2.33, 6.1



### Technische Daten

### Données techniques

### Dati tecnici

### Technical data

Typ	Type	Tipo	Type	LE 25-60	LE 25-120	LE 25-200
Artikelnummer	No d'article	Codice No.	Reference No.	1000023	1000024	1000025
Nennhub H	Course H	Corsa H	Stroke H	60 mm	120 mm	200 mm
Max. Nutzgewicht=m	Charge utile max.=m	Carico utile max.=m	Max. useful load=m	10 kg	9 kg	6 kg
Kolbenkraft einfahrend	Force du piston rentrant	Forza di rientro	Piston force retracted	195 N (5 bar)	195 N (5 bar)	195 N (5 bar)
Kolbenkraft ausfahrend	Force du piston sortant	Forza di uscita	Piston force extended	220 N (5 bar)	220 N (5 bar)	220 N (5 bar)
Betriebsdruck	Pression d'air	Pressione aria	Working pressure	3-8 bar	3-8 bar	3-8 bar
Luftanschlüsse (P)	Raccords d'air (P)	Raccordi pneumatici (P)	Air connectors (P)	G1/8"	G1/8"	G1/8"
Luftverbrauch/Hub	Consommation d'air/course	Consumo aria/corsa	Air consumption/stroke	0.16 NL	0.33 NL	0.55 NL
Temperaturbereich	Ecart de température	Gamma di temperatura	Temperature range	-10° +60°C	-10° +60°C	-10° +60°C
Gewicht	Poids	Peso	Weight	2.0 kg	2.8 kg	4.0 kg
Wiederholgenauigkeit	Reproductibilité	Ripetibilità	Repeating accuracy	± 0.01 mm	± 0.01 mm	± 0.01 mm
Einbaulage (beliebig)	Position de montage (à volonté)	Posizione di montaggio (a volontà)	Any given position (any)			

#### Lieferumfang:

#### Matériel livré:

#### Ambito di fornitura:

#### Items supplied:

2 Anschlagschr. AS 08/40

2 Vis d'arrêt AS 08/40

2 Viti d'arresto AS 08/40

2 Stop screws AS 08/40

2 Stossdämpfer BSM 14

2 Amortisseurs BSM 14

2 Ammortizzatori BSM 14

2 Shock absorbers BSM 14

2 Positionierringe

2 Bagues de positionnement

2 Anelli di posizionamento

2 Positioning rings

### Taktzeit

Messungen bei 5 bar

### Temps de cycle

Mesuré à 5 bar

### Tempo di ciclo

Misurato con 5 bar

### Cycle time

Measurements at 5 bar

m=Masse [kg]

m=Masse [kg]

m=Massa [kg]

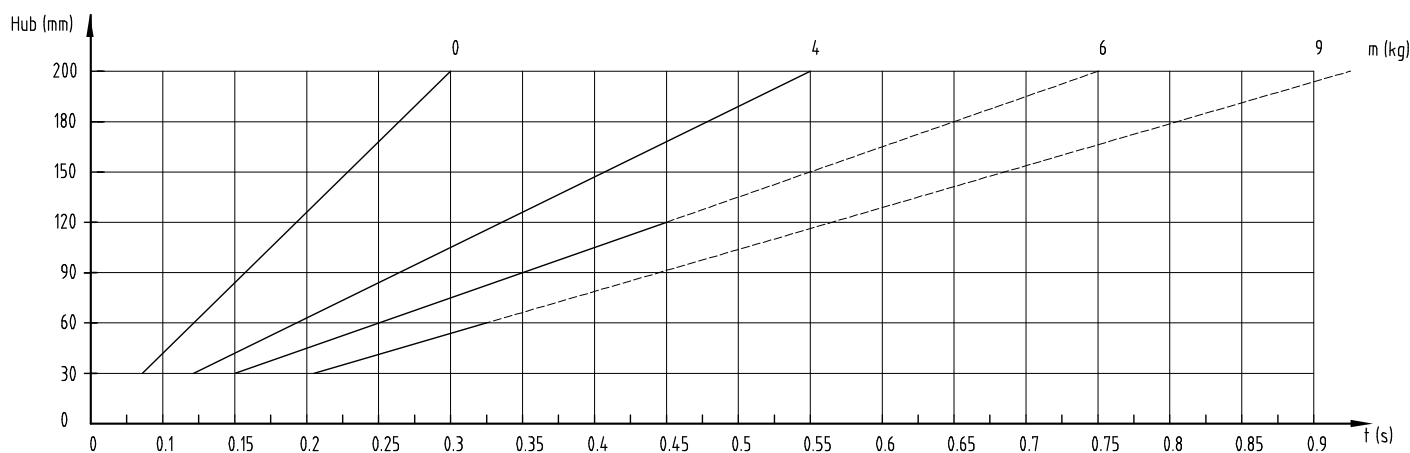
m=Mass [kg]

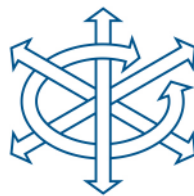
t = Hubzeit [s]

t = Temps par course [s]

t = Tempo di corsa [s]

t = Stroke time [s]





## Zubehör LE 25

## Accessoires LE 25

## Accessori LE 25

## Accessory LE 25

Montageplatte	Plaque de montage	Piastra di montaggio	Connecting plate	LE 25-60	LE 25-120	LE 25-200
Artikelnummer	No d'article	Codice No.	Reference No.	4000019	4000021	4000023
Mass A	Dimension A	Dimensione A	Dimension A	201 mm	321 mm	481mm
Mass B	Dimension B	Dimensione B	Dimension B	189 mm	309 mm	469 mm
Gewicht	Poids	Peso	Weight	0.36 kg	0.54 kg	0.77 kg

Lieferumfang:	Matériel livré:	Ambito di fornitura:	Items supplied:
2 Positionerringe	2 Bagues de positionnement	2 Anelli di posizionamento	2 Positioning rings
4 Schrauben M6x12	4 Vis M6x12	4 Viti M6x12	4 Screws M6x12

