

### Greifzange GZ 12

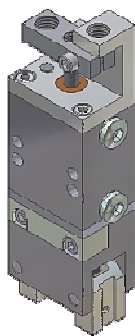
### Pince GZ 12

### Mano di presa GZ 12

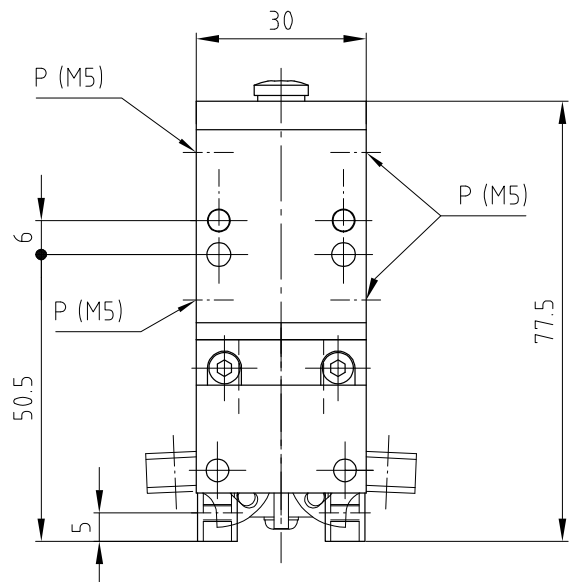
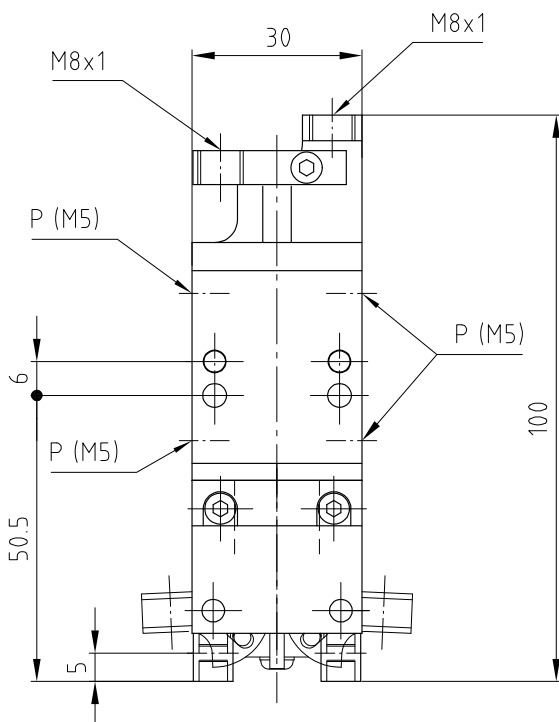
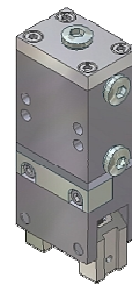
### Gripper GZ 12

Typ	Type	Tipo	Type	GZ 12 KA	GZ 12 K
Artikelnummer	No d'article	Codice No.	Reference No.	3000004	3000005
Öffnungswinkel	Angle d'ouverture	Angolo di apertura	Opening angle	175°	175°
Gewicht	Poids	Peso	Weight	0.17 kg	0.15 kg
Luftanschlüsse (P)	Raccords d'air (P)	Raccordi pneumatici (P)	Air connectors (P)	M5	M5

**GZ 12 KA**



**GZ 12 K**



Fehlende Daten finden sie auf den Seiten 4.22, 4.23

Vous trouverez les données manquantes aux pages 4.22, 4.23

I dati mancanti sono reperibili alle pagine 4.22, 4.23

Missing data can be found on pages 4.22, 4.23

**Typenschlüssel:**

K : kompakt  
KA: kompakt, abfragbar

**Variantes de modèle**

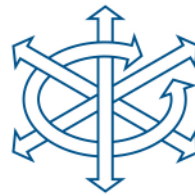
K : compact  
KA: compact, interrogeable

**Codici di modello:**

K : compatto  
KA: compatto, definibile

**Type designation:**

K : compact  
KA: compact, selectable



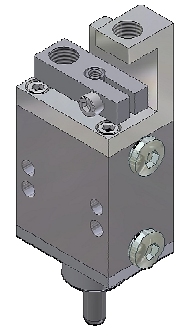
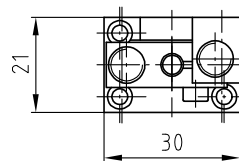
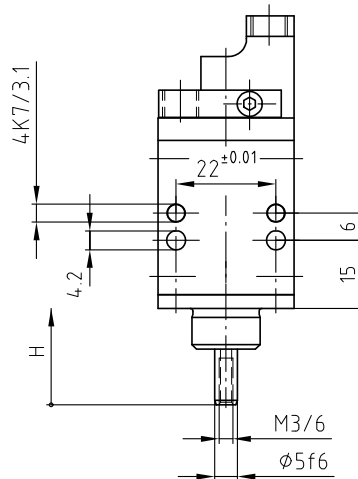
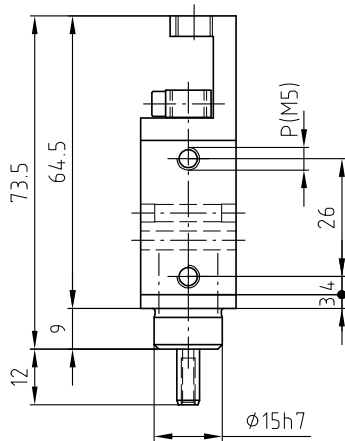
### Greifzange GZ 12

### Pince GZ 12

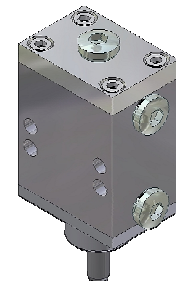
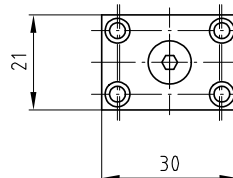
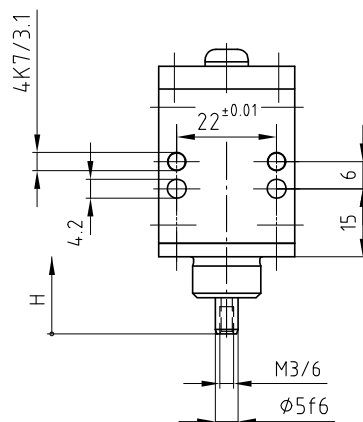
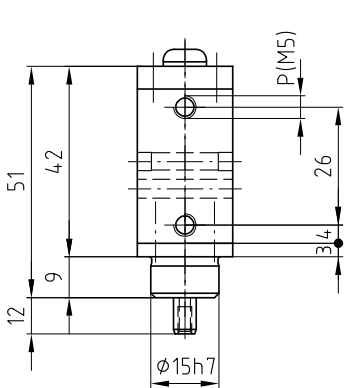
### Mano di presa GZ 12

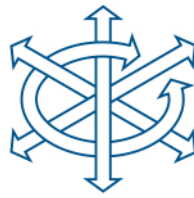
### Gripper GZ 12

Zangenzylinder	Vérin de pince	Cilindro di serraggio	Gripper cylinder	ZZ 12 KA
Artikelnummer	No d'article	Codice No.	Reference No.	3000007
Nennhub H	Course H	Corsa H	Stroke H	12 mm
Gewicht	Poids	Peso	Weight	0.10 kg
Luftanschlüsse (P)	Raccords d'air (P)	Raccordi pneumatici (P)	Air connectors (P)	M5



Zangenzylinder	Vérin de pince	Cilindro di serraggio	Gripper cylinder	ZZ 12 K
Artikelnummer	No d'article	Codice No.	Reference No.	3000008
Nennhub H	Course H	Corsa H	Stroke H	12 mm
Gewicht	Poids	Peso	Weight	0.09 kg
Luftanschlüsse (P)	Raccords d'air (P)	Raccordi pneumatici (P)	Air connectors (P)	M5





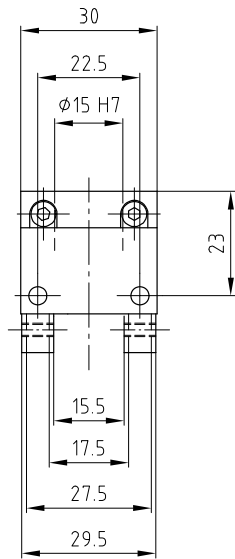
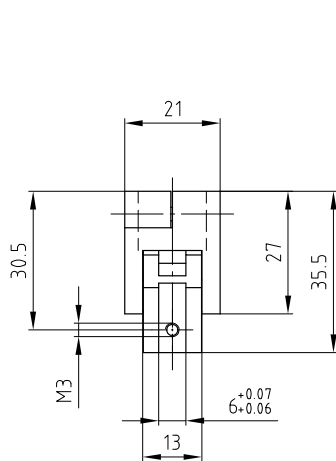
### Greifzange GZ 12

### Pince GZ 12

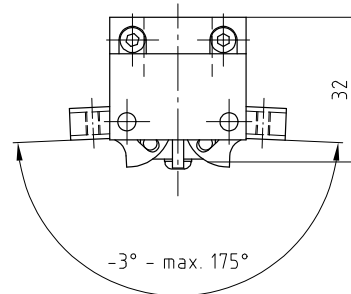
### Mano di presa GZ 12

### Gripper GZ 12

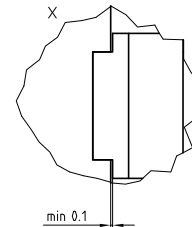
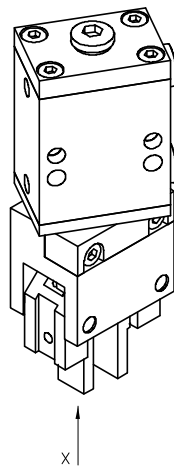
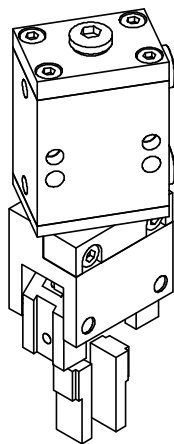
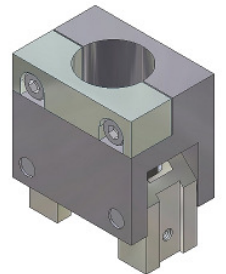
Zangenkörper	Corps de pince	Corpo prensile	Gripper body	GZ 12
Artikelnummer	No d'article	Codice No.	Reference No.	3000006
Öffnungswinkel	Angle d'ouverture	Angolo di apertura	Opening angle	175°
Gewicht	Poids	Peso	Weight	0.07 kg



geschlossen fermé chiusa closed



offen ouvert aperta open



Zubehör finden Sie auf den Seiten 4.25, 4.26, 6.1

Vous trouvez des accessoires aux pages 4.25, 4.26, 6.1

Per gli accessori, vedi alle pagine 4.25, 4.26, 6.1

You will find accessories on pages 4.25, 4.26, 6.1

**Technische Daten**
**Données techniques**
**Dati tecnici**
**Technical data**

Typ	Type	Tipo	Type	GZ 12 KA	GZ 12 K
Artikelnummer	No d'article	Codice No.	Reference No.	3000004	3000005
Öffnungswinkel	Angle d'ouverture	Angolo di apertura	Opening angle	175°	175°
Greifzeit bei max. Hub	Temps de préhension à ouverture max.	Tempo di presa a corsa max	Clamping time at max. stroke	0.08s	0.08s
Luftanschlüsse (P)	Raccords d'air (P)	Raccordi pneumatici (P)	Air connectors (P)	M5	M5
Gewicht	Poids	Peso	Weight	0.17 kg	0.15 kg
Betriebsdruck	Pression d'air	Pressione aria	Working pressure	3-8 bar	3-8 bar
Luftverbrauch/Hub	Consommation d'air/course	Consumo aria/corsa	Air consumption/stroke	0.002 NL	0.002 NL
Temperaturbereich	Ecart de températures	Gamma di temperatura	Temperature range	-10°/+60°C	-10°/+60°C
Greifkraft F	Assurance de la force de préhension F	Forza di presa F	Clamping force F	9N	9N
Greifkraftsicherung	Sécurité de force de préhension	Fusibile forza di presa	Clamping power safety device	schliessend chiusura	se fermant closing

**Lieferumfang :**
**Matériel livré :**
**Ambito di fornitura:**
**Items supplied:**

2 Zentrierstift ø4x6

2 Goupilles de centrage ø4x6

2 Perni di centraggio ø4x6

2 Centering pins ø4x6

**Greifkraftdiagramm**
**Diagramme de force de préhension**
**Diagramma della forza di presa**
**Clamping force diagram**
**Zentrische Greifkraft**
**Force de préhension centrée**
**Forza di presa centrica**
**Gripping forces central**

F = Greifkraft (N)

F = Force de préhension (N)

F = Forza di presa (N)

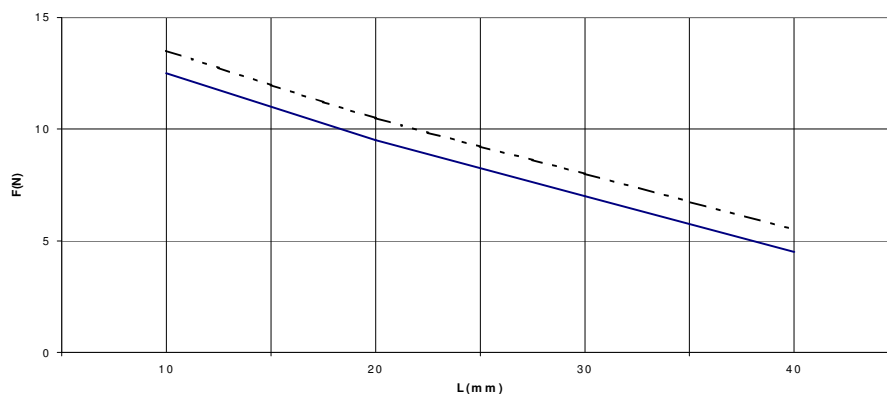
F = Clamping force (N)

L = Greifabstand (mm)

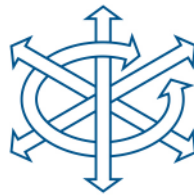
L = Ecart de préhension (mm)

L = Distanza di presa (mm)

L = Clamping range (mm)



— Greifkraft  
 Force de préhension  
 Forza di presa  
 Clamping force  
 - - Greifkraft + Federkraft  
 Force de préhension + ressort  
 Forza di presa + fusibile  
 Clamping force + spring



### Zubehör GZ 12

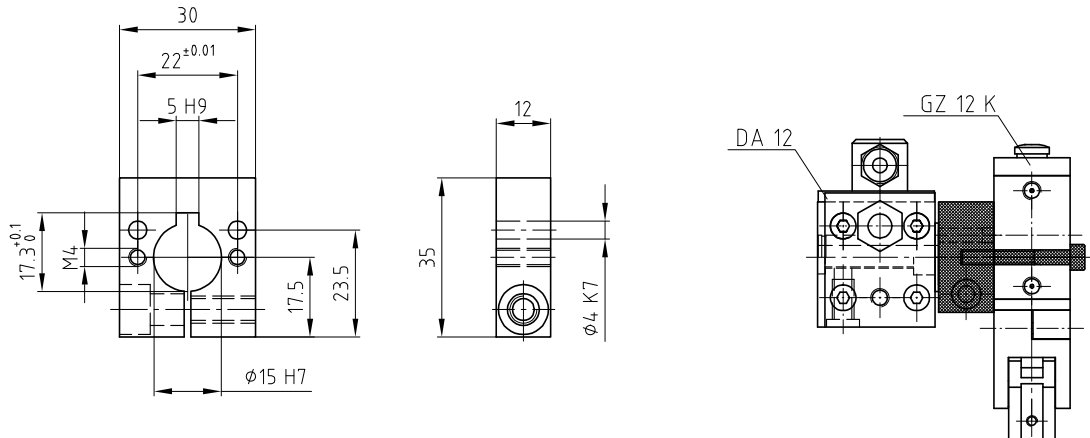
### Accessoires GZ 12

### Accessori GZ 12

### Accessory GZ 12

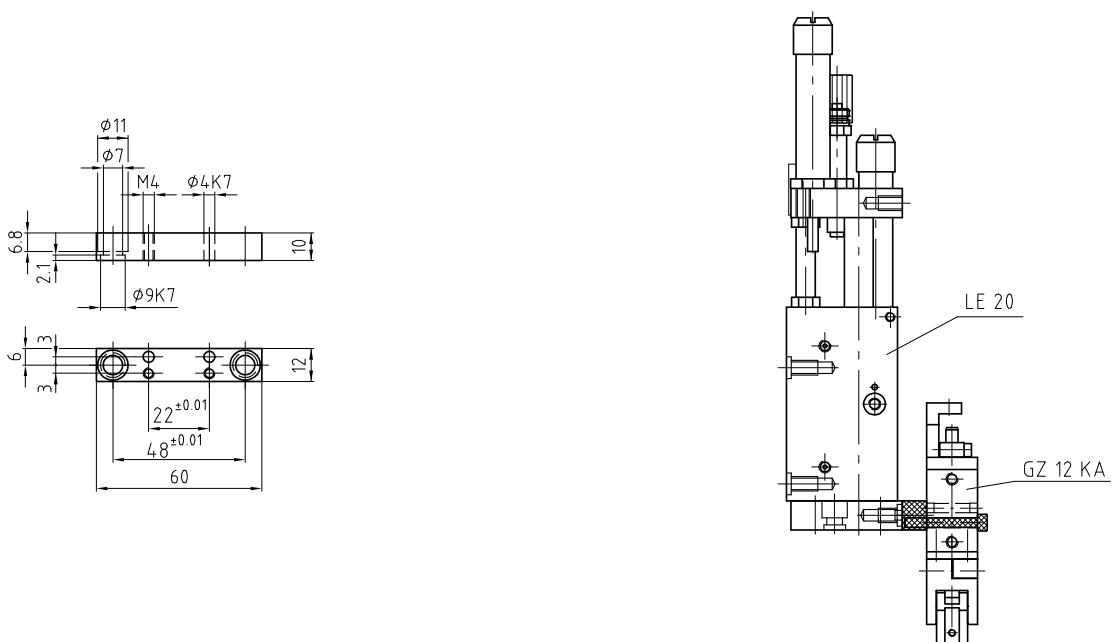
Flansch	Bride	Flangia	Flange	400062
---------	-------	---------	--------	--------

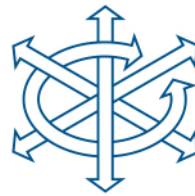
<b>Lieferumfang:</b> 2 Schrauben M4x30	<b>Matériel livré:</b> 2 Vis M4x30	<b>Ambito di fornitura:</b> 2 Viti M4x30	<b>Items supplied:</b> 2 Screws M4x30
---	---------------------------------------	---	--



Verbindungsplatte	Plaque de raccordement	Piastra di collegamento	Connecting plate	400063
-------------------	------------------------	-------------------------	------------------	--------

<b>Lieferumfang:</b> 2 Positionerringe 2 Schrauben M6x16 2 Schrauben M4x30	<b>Matériel livré:</b> 2 Bagues de positionnement 2 Vis M6x16 2 Vis M4x30	<b>Ambito di fornitura:</b> 2 Anelli di posizionamento 2 Viti M6x16 2 Viti M4x30	<b>Items supplied:</b> 2 Positioning rings 2 Screws M6x16 2 Screws M4x30
---	--	---	---





### Zubehör GZ 12

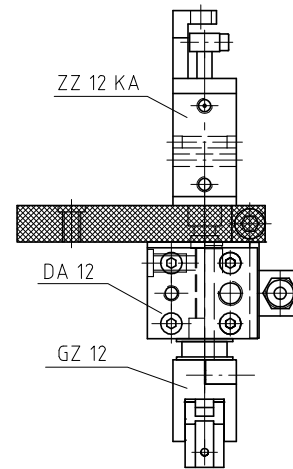
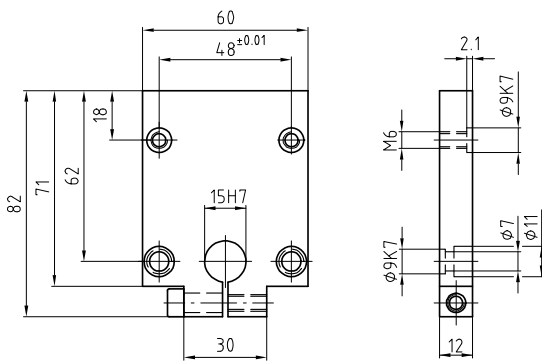
### Accessoires GZ 12

### Accessori GZ 12

### Accessory GZ 12

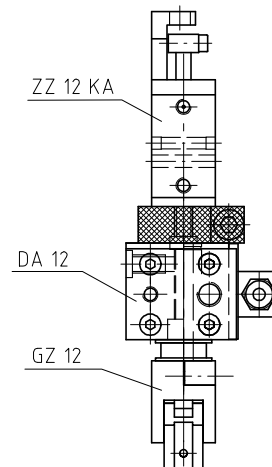
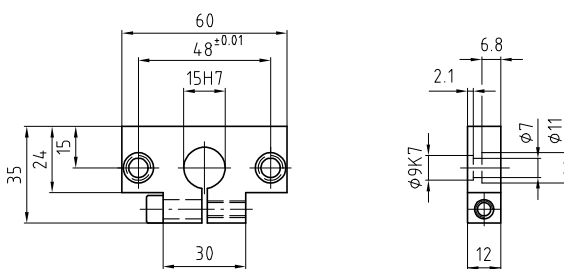
<b>Verbindungsplatte</b>	<b>Plaque de raccordement</b>	<b>Piastra di collegamento</b>	<b>Connecting plate</b>	<b>4000064</b>
--------------------------	-------------------------------	--------------------------------	-------------------------	----------------

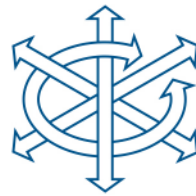
<b>Lieferumfang:</b> 2 Positionierringe 2 Schrauben M6x16	<b>Matériel livré:</b> 2 Bagues de positionnement 2 Vis M6x16	<b>Ambito di fornitura:</b> 2 Anelli di posizionamento 2 Viti M6x16	<b>Items supplied:</b> 2 Positioning rings 2 Screws M6x16
---	---	---	---



<b>Klemmplatte</b>	<b>Plaque de serrage</b>	<b>Piastra di fissaggio</b>	<b>Clamping plate</b>	<b>4000065</b>
--------------------	--------------------------	-----------------------------	-----------------------	----------------

<b>Lieferumfang:</b> 2 Positionierringe 2 Schrauben M6x16	<b>Matériel livré:</b> 2 Bagues de positionnement 2 Vis M6x16	<b>Ambito di fornitura:</b> 2 Anelli di posizionamento 2 Viti M6x16	<b>Items supplied:</b> 2 Positioning rings 2 Screws M6x16
---	---	---	---



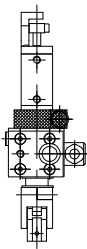
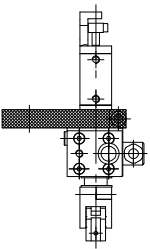
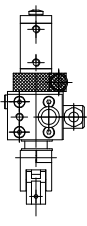
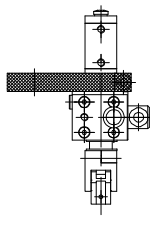


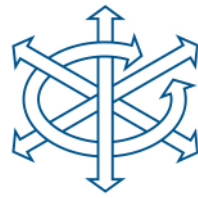
Greif-Drehkombinationen

Combinaison pince-rotatif

Combinazione presa-rotazione

Combination gripper-rotary

	GZ 12 KA	GZ 12 KA	GZ 12 K	GZ 12 K
				
DA 12	3000041	3000042	3000049	3000050
DA 12 SD 08	3000043	3000044	3000051	3000052
DA 12 M	3000045	3000046	3000053	3000054
DA 12 2M	3000047	3000048	3000055	3000056



# FELD

## AUTOMATION

Greif-Drehkombinationen

Combinaison pince-rotatif

Combinazione presa-rotazione

Combination gripper-rotary

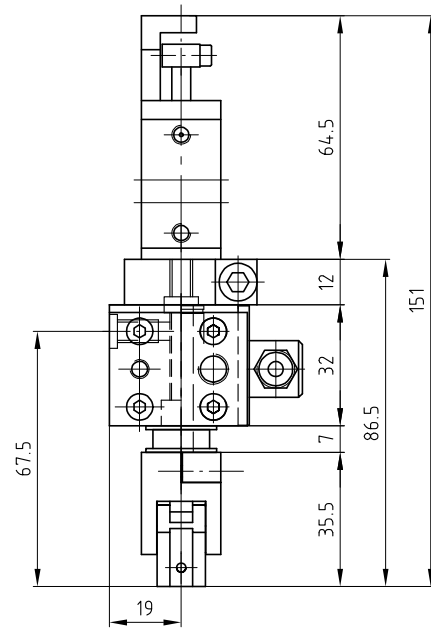
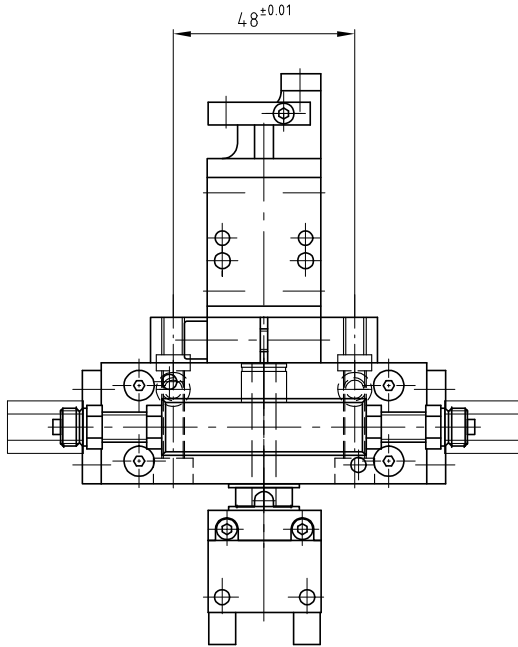
GZ 12 KA-DA 12

GZ 12 KA-DA 12

GZ 12 KA-DA 12

GZ 12 KA-DA 12

3000041



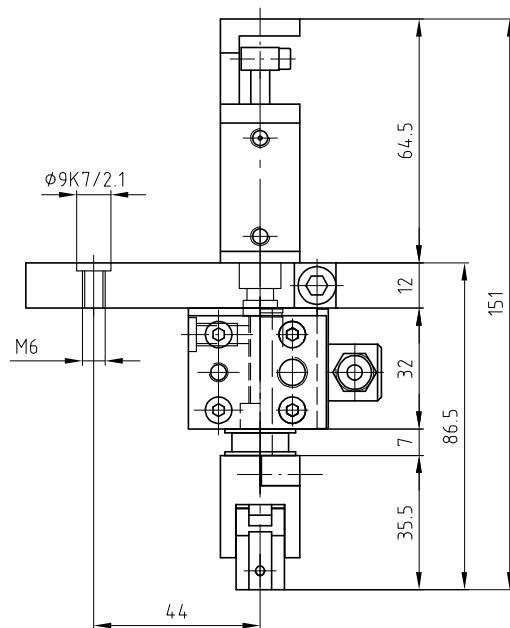
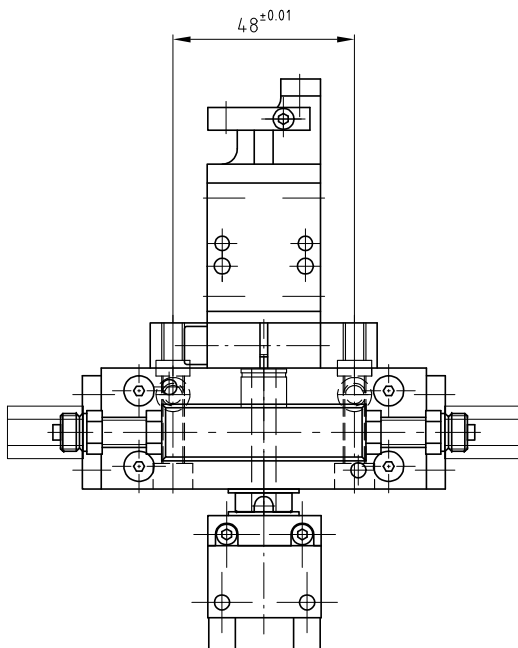
GZ 12 KA-DA 12

GZ 12 KA-DA 12

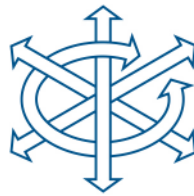
GZ 12 KA-DA 12

GZ 12 KA-DA 12

3000042







# FELD

## AUTOMATION

Greif-Drehkombinationen

Combinaison pince-rotatif

Combinazione presa-rotazione

Combinaison gripper-rotary

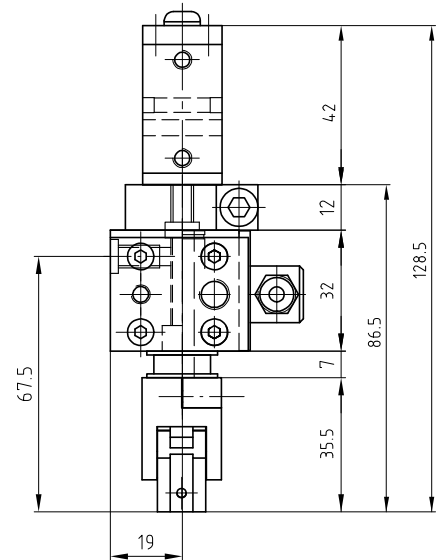
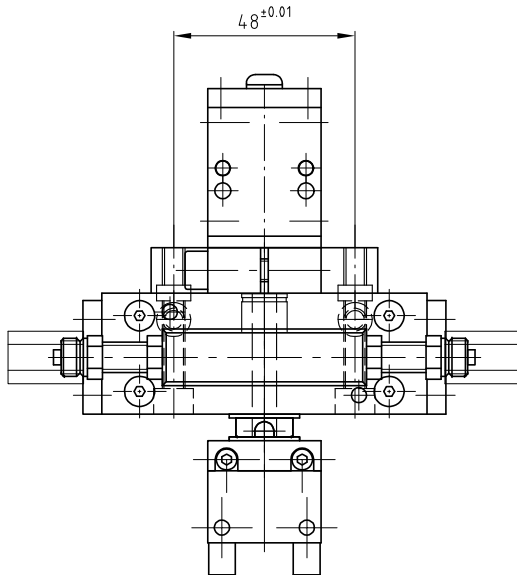
GZ 12 K-DA 12

GZ 12 K-DA 12

GZ 12 K-DA 12

GZ 12 K-DA 12

300049



GZ 12 K-DA 12

GZ 12 K-DA 12

GZ 12 K-DA 12

GZ 12 K-DA 12

300050

