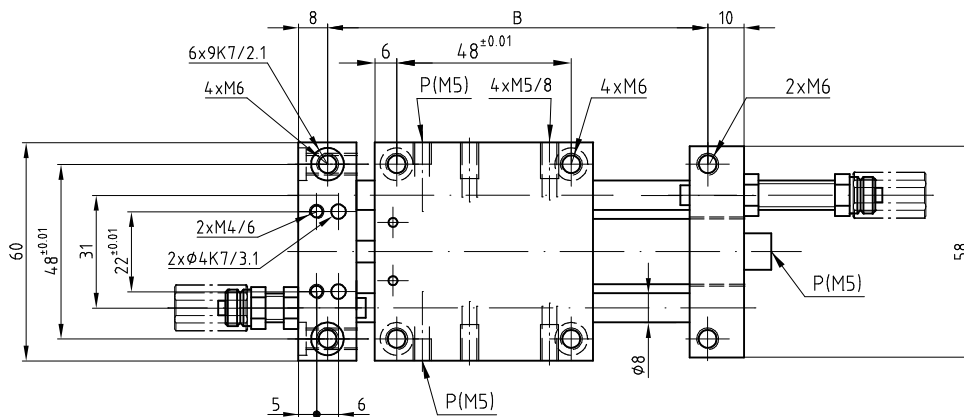
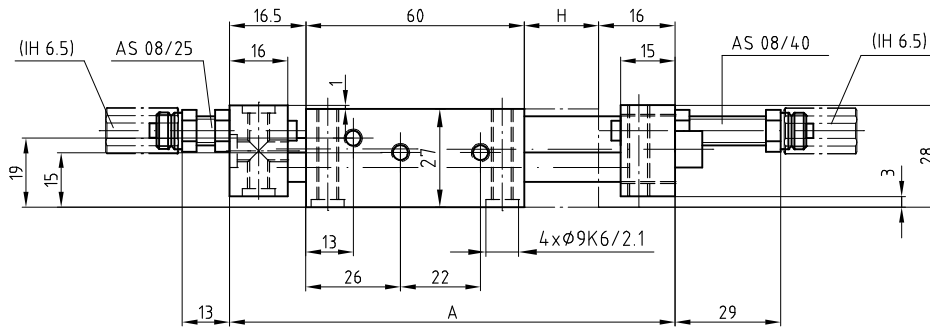


Linear-Element LE 16

Élément linéaire LE 16

Unita' lineare LE 16

Linear element LE 16



P=Luftanschluss M5

P=Raccord d'air M5

P=Raccordi pneumatici M5

P=Air connections M5

Typ Tipo	Type Type	LE 16-30	LE 16-60	LE 16-90	LE 16-120
Artikelnummer	No d'article	05.21.000	05.22.000	05.23.000	05.24.000
Codice No.	Reference No.				
Nennhub H	Course H	30 mm	60 mm	90 mm	120 mm
Corsa H	Stroke H				
Mass A	Dimension A	122.5 mm	152.5 mm	182.5 mm	212.5 mm
Dimensione A	Dimension A				
Mass B	Dimension B	104.5 mm	134.5 mm	164.5 mm	194.5 mm
Dimensione B	Dimension B				

Sonderausführungen auf Anfrage

Constructions particulières sur demande

Esecuzioni speciali su richiesta

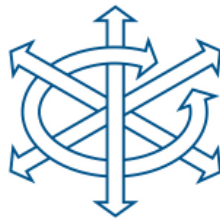
Special types on request

Zubehör finden Sie auf den
Seiten 1.23, 1.24, 5.1

Vous trouvez des accessoires
aux pages 1.23, 1.24, 5.1

Per gli accessori, vedi alle
pagine 1.23, 1.24, 5.1

Accessories are to be found on
pages 1.23, 1.24, 5.1



Technische Daten

Données techniques

Dati tecnici

Technical data

Typ Tipo	Type Type	LE 16-30	LE 16-60	LE 16-90	LE 16-120
Artikelnummer	No d'article	05.21.000	05.22.000	05.23.000	05.24.000
Codice No.	Reference No.				
Nennhub H	Course H	30 mm	60 mm	90 mm	120 mm
Corsa H	Stroke H				
Max. Nutzgewicht=m	Charge utile max.=m	1.5 kg	1.5 kg	1.0 kg	1.0 kg
Carico utile max.=m	Max. useful load=m				
Kolbenkraft einfahrend	Force du piston entrer	78 N	78 N	78 N	78 N
Forza di rientro	Piston force retract	(5 bar)	(5 bar)	(5 bar)	(5 bar)
Kolbenkraft ausfahrend	Force du piston sortir	90 N	90 N	90 N	90 N
Forza di uscita	Piston force extend	(5 bar)	(5 bar)	(5 bar)	(5 bar)
Betriebsdruck	Pression d'air	3 – 8 bar	3 – 8 bar	3 – 8 bar	3 – 8 bar
Pressione aria	Working pressure				
Luftanschlüsse (P)	Raccords d'air (P)	M5	M5	M5	M5
Raccordi pneumatici (P)	Air connectors (P)				
Luftverbrauch/Hub	Consommation d'air/ Course	0.030 NL	0.060 NL	0.090 NL	0.120 NL
Consumo aria/ Corsa	Air consumption/ Stroke				
Temperaturbereich	Ecart de température	-10°/ +60°C	-10°/ +60°C	-10°/ +60°C	-10°/ +60°C
Gamma di temperatura	Temperature range				
Gewicht	Poids	0.49 kg	0.53 kg	0.57 kg	0.61 kg
Peso	Weight				
Wiederholgenauigkeit	Reproductibilité	±0.01 mm	±0.01 mm	±0.01 mm	±0.01 mm
Ripetibilità	Positioning repeatability				
Einbaulage (beliebig)	Position de montage (à volonté)				
Posizione di montaggio (a volontà)	Installation position (any)				

Lieferumfang:

1 Anschlagsschrauben AS 08/25
1 Anschlagsschrauben AS 08/40
2 Positionierringe

Matériel livré:

1 Vis d'arrêt AS 08/25
1 Vis d'arrêt AS 08/40
2 Bagues de positionnement

Ambito di fornitura:

1 Vite d'arresto AS 08/25
1 Vite d'arresto AS 08/40
2 Anelli di posizionamento

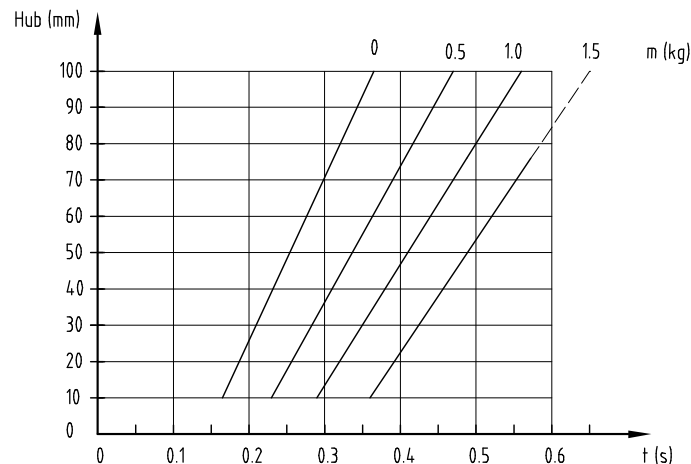
Items supplied:

1 Stop screw AS 08/25
1 Stop screw AS 08/40
2 Positioning rings

Taktzeit

Messungen bei 5 bar

m=Masse [kg]
t = Hubzeit [s]

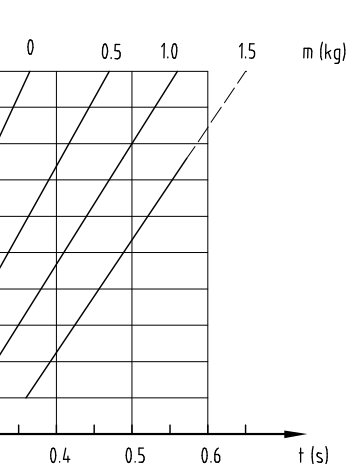


ohne Stossdämpfer
sans amortisseur

Temps de cycle

Mesuré à 5 bar

m=Masse [kg]
t = Temps par course [s]

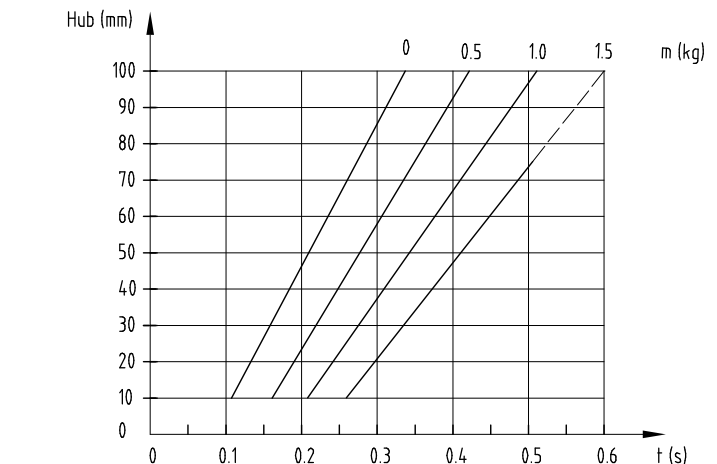


senza ammortizzatore
without shock absorber

Tempo di ciclo

Misurato con 5 bar

m=Massa [kg]
t = Tempo di corsa [s]

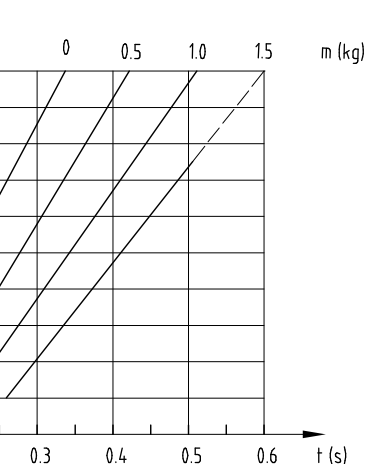


mit Stossdämpfer M8x1
avec amortisseur M8x1

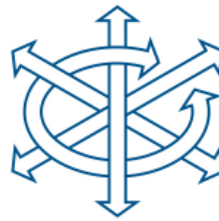
Cycle time

Measurements at 5 bar

m=Mass [kg]
t = Stroke time [s]



con ammortizzatore M8x1
with shock absorber M8x1



Zubehör LE 16

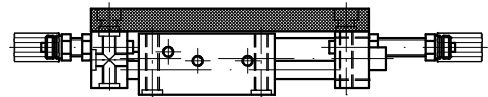
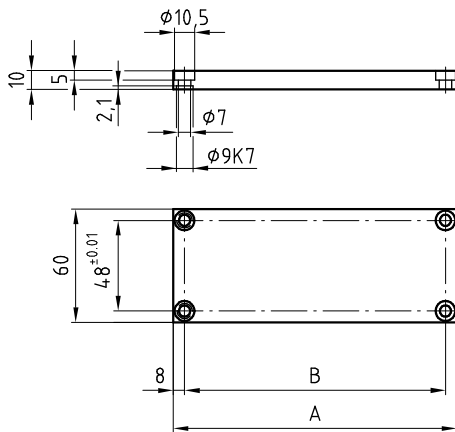
Accessoires LE 16

Accessori LE 16

Accessory LE 16

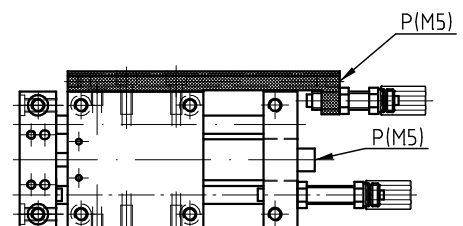
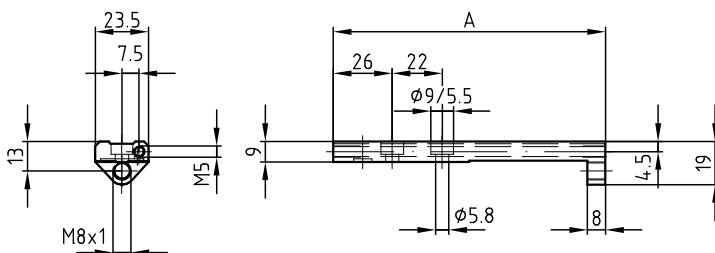
Montageplatte	Plaque de montage	Piastra di montaggio	Connecting plate	LE 16-30	LE 16-60	LE 16-90	LE 16-120
Artikelnummer	No d'article	Codice No.	Reference No.	05.21.020	05.22.020	05.23.020	05.24.020
Mass A	Dimension A	Dimensione A	Dimension A	122.5 mm	152.5 mm	182.5 mm	212.5 mm
Mass B	Dimension B	Dimensione B	Dimension B	104.5 mm	134.5 mm	164.5 mm	194.5 mm
Gewicht	Poids	Peso	Weight	0.24 kg	0.28 kg	0.32 kg	0.38 kg

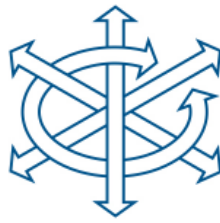
Lieferumfang:	Matériel livré:	Ambito di fornitura:	Items supplied:
2 Positionierringe	2 Bagues de positionnement	2 Anelli di posizionamento	2 Positioning rings
4 Schrauben M6x16	4 Vis M6x16	4 Viti M6x16	4 Screws M6x16



Anschlagwinkel	Equerre butée	Angolo di arresto	Stop L-bar	LE 16-30	LE 16-60	LE 16-90	LE 16-120
Artikelnummer	No d'article	Codice No.	Reference No.	04.01.031	04.02.031	04.03.031	04.04.031
Mass A	Dimension A	Dimensione A	Dimension A	120 mm	150 mm	180 mm	210 mm
Gewicht	Poids	Peso	Weight	0.07 kg	0.09 kg	0.11 kg	0.13 kg

Lieferumfang:	Matériel livré:	Ambito di fornitura:	Items supplied:
2 Schrauben M5x12	2 Vis M5x12	2 Viti M5x12	2 Screws M5x12
1 O-Ring 12x1.5	1 Joint torique 12x1.5	1 Anello toroidale 12x1.5	1 O-ring 12x1.5





Zubehör LE 16

Accessoires LE 16

Accessori LE 16

Accessory LE 16

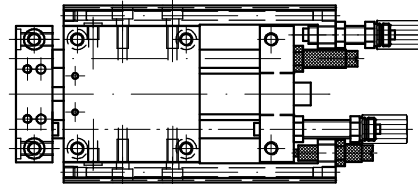
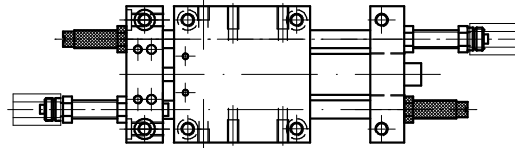
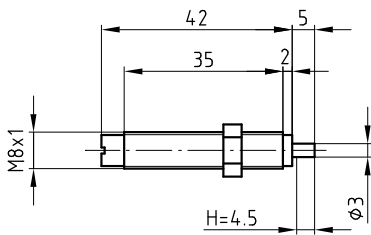
Stossdämpfer

Amortisseur

Ammortizzatore

Shock absorber

85.10.000



Technische Daten (S.1.22, 6.1)

Données techniques (S.1.22, 6.1)

Dati tecnici (S.1.22, 6.1)

Technical data (S.1.22, 6.1)