

### Drehantrieb DA 25

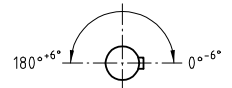
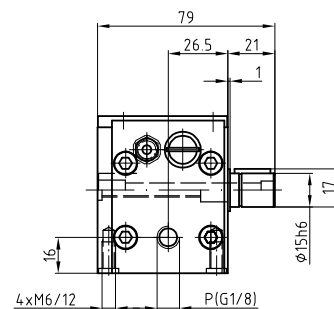
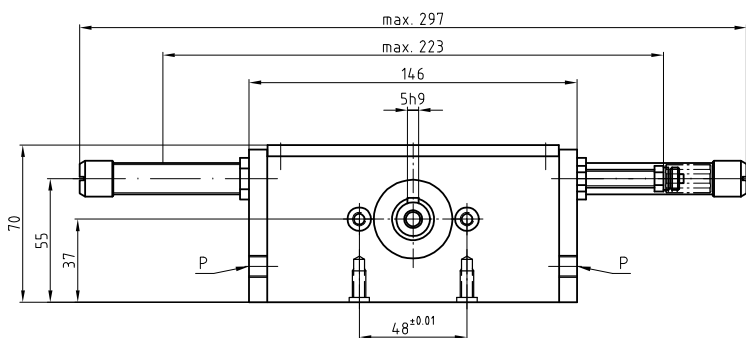
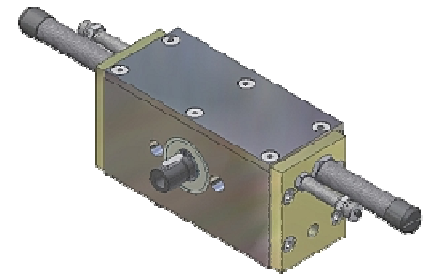
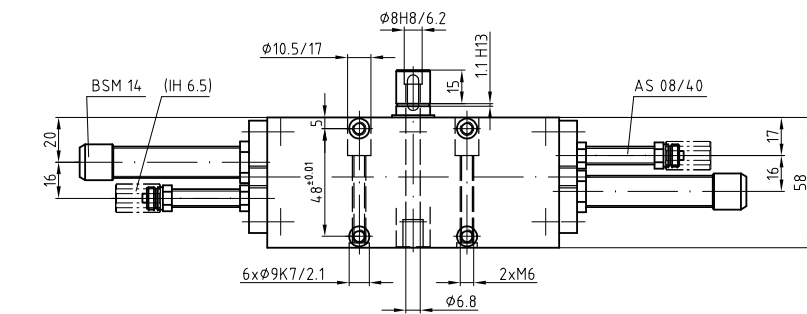
### Élément rotatif DA 25

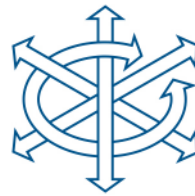
### Unità rotante DA 25

### Rotary drive DA 25

DA 25	DA 25	DA 25	DA 25	2000033
-------	-------	-------	-------	---------

Lieferumfang:	Matériel livré:	Ambito di fornitura:	Items supplied:
2 Anschlagschr. AS 08/40	2 Vis d'arrêt AS 08/40	2 Viti d'arresto AS 08/40	2 Stop screws AS 08/40
2 Stossdämpfer BSM 14	2 Amortisseurs BSM 14	2 Ammortizzatori BSM 14	2 Shock absorbers BSM 14
2 Positionierringe	2 Bagues de positionnement	2 Anelli di posizionamento	2 Positioning rings
1 Federkeil 5x5x16	1 Clavette 5x5x16	1 Linguetta 5x5x16	1 Key wedge 5x5x16





### Drehantrieb DA 25

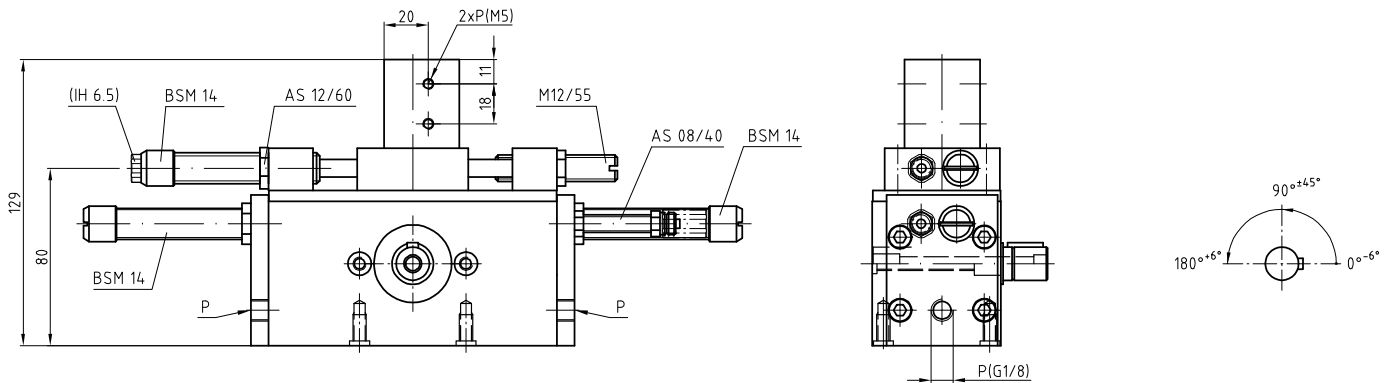
### Élément rotatif DA 25

### Unità rotante DA 25

### Rotary drive DA 25

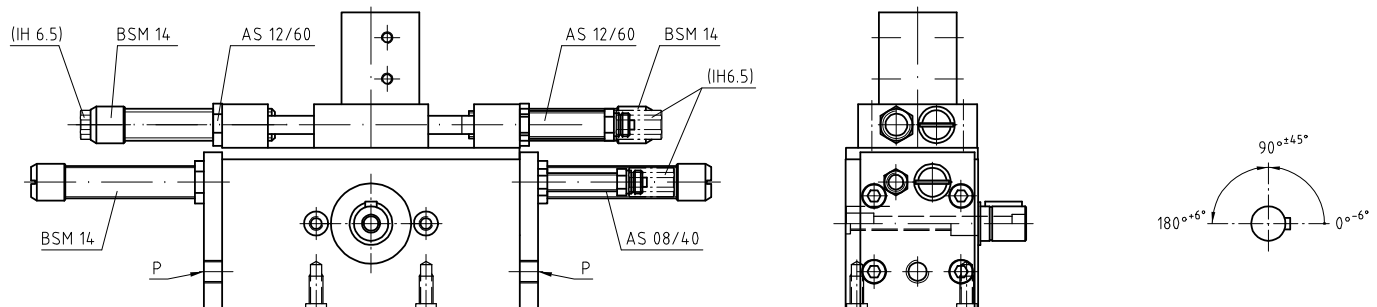
DA 25 M	DA 25 M	DA 25 M	DA 25 M	200034
---------	---------	---------	---------	--------

Lieferumfang:	Matériel livré:	Ambito di fornitura:	Items supplied:
2 Anschlagschr. AS 08/40	2 Vis d'arrêt AS 08/40	2 Viti d'arresto AS 08/40	2 Stop screws AS 08/40
1 Anschlagschr. AS 12/60	1 Vis d'arrêt AS 12/60	1 Vite d'arresto AS 12/60	1 Stop screw AS 12/60
3 Stossdämpfer BSM 14	3 Amortisseurs BSM 14	3 Ammortizzatori BSM 14	3 Shock absorbers BSM 14
1 Zwischenpositionszyylinder	1 Vérin de position intermédiaire	1 Cilindro di posizionamento intermedio	1 Intermediate position cylinder
2 Positioniereringe	2 Bagues de positionnement	2 Anelli di posizionamento	2 Positioning rings
1 Federkeil 5x5x16	1 Clavette 5x5x16	1 Linguetta 5x5x16	1 Key wedge 5x5x16



DA 25 2M	DA 25 2M	DA 25 2M	DA 25 2M	200035
----------	----------	----------	----------	--------

Lieferumfang:	Matériel livré:	Ambito di fornitura:	Items supplied:
2 Anschlagschr. AS 08/40	2 Vis d'arrêt AS 08/40	2 Viti d'arresto AS 08/40	2 Stop screws AS 08/40
2 Anschlagschr. AS 12/60	2 Vis d'arrêt AS 12/60	2 Viti d'arresto AS 12/60	2 Stop screws AS 12/60
4 Stossdämpfer BSM 14	4 Amortisseurs BSM 14	4 Ammortizzatori BSM 14	4 Shock absorbers BSM 14
1 Zwischenpositionszyylinder	1 Vérin de position intermédiaire	1 Cilindro di posizionamento intermedio	1 Intermediate position cylinder
2 Positioniereringe	2 Bagues de positionnement	2 Anelli di posizionamento	2 Positioning rings
1 Federkeil 5x5x16	1 Clavette 5x5x16	1 Linguetta 5x5x16	1 Key wedge 5x5x16

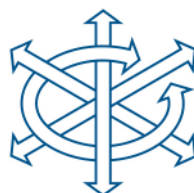


Zubehör finden Sie auf den Seiten 3.44, 6.1

Vous trouvez des accessoires aux pages 3.44, 6.1

Per gli accessori, vedi alle pagine 3.44, 6.1

You will find accessories on pages 3.44, 6.1



### Technische Daten

### Données techniques

### Dati tecnici

### Technical data

Typ	Type	Tipo	Type	DA 25	DA 25 M	DA 25 2M
Artikelnummer	No d'article	Codice No.	Reference No.	2000033	2000034	2000035
Drehwinkel	Angle de rotation	Angolo di rotazione	Rotation angle	0-180°	0-180°	0-180°
Drehmoment	Couple de rotation	Coppia di rotazione	Torque	2.5 Nm	2.5 Nm	2.5 Nm
Position	Positions	Posizioni	Positions	2	3	4
Betriebsdruck	Pression d'air	Pressione aria	Working pressure	3-8 bar	3-8 bar	3-8 bar
Luftanschlüsse (P)	Raccords d'air (P)	Raccordi pneumatici (P)	Air connectors (P)	G1/8	G1/8	G1/8
Luftverbrauch/180°	Consommation d'air/180°	Consumo aria/180°	Air consumption/180°	0.10 NL	0.11 NL	0.11 NL
Temperaturbereich	Ecart de temperature	Gamma di temperatura	Temperature range	-10% +60°C	-10% +60°C	-10% +60°C
Gewicht	Poids	Peso	Weight	2.00 kg	2.80 kg	2.90 kg
max. Belastung radial	Charge radiale max.	Carico radiale max.	Max. radial load	1400 N	1400 N	1400 N
max. Belastung axial	Charge axiale max.	Carico assiale max.	Max. axial load	800 N	800 N	800 N
max. Trägheitsmoment (J)	Moment d'inertie max. (J)	Momento d'inerzia max (J)	Max. moment of inertia (J)	0.4 kgm <sup>2</sup>	0.4 kgm <sup>2</sup>	0.4 kgm <sup>2</sup>
Winkelgenauigkeit	Précision angulaire	Precisione angolare	Angular precision	<6'	<6'	<6'
Einbaulage (beliebig)	Position de montage (à volonté)	Posizione di montaggio (a volontà)	Any given position (any)			

### Taktzeit

Messungen bei 5 bar

J = Trägheitsmoment  
[kgm<sup>2</sup>]

t = Drehzeit  
[s]

### Temps de cycle

Mesuré à 5 bar

J = Moment d'inertie  
[kgm<sup>2</sup>]

t = Durée de rotation  
[s]

### Tempo di ciclo

Misurato con 5 bar

J = Momento d'inerzia  
[kgm<sup>2</sup>]

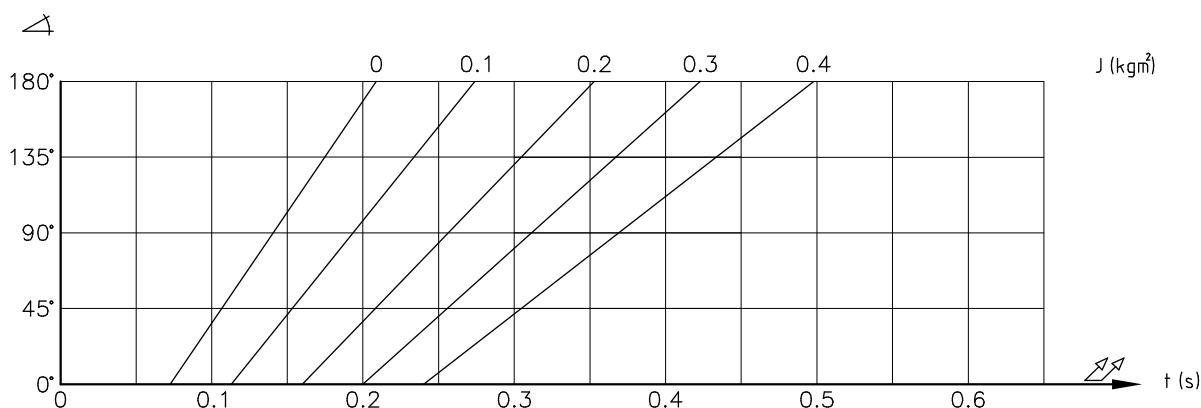
t = Tempo di rotazione  
[s]

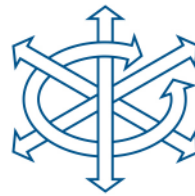
### Cycle time

Measurements by 5 bar

J = Moment of inertia  
[kgm<sup>2</sup>]

t = Rotation time  
[s]





### Zubehör DA 25

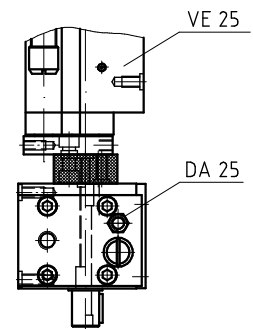
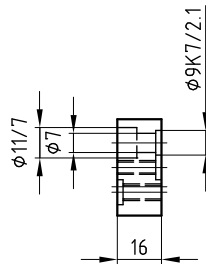
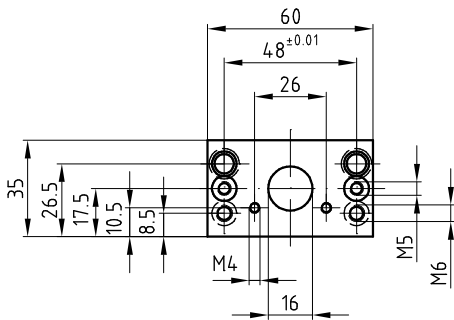
### Accessoires DA 25

### Accessori DA 25

### Accessory DA 25

<b>Verbindungsplatte</b>	<b>Plaque de raccordement</b>	<b>Piastra di collegamento</b>	<b>Connecting plate</b>	<b>4000051</b>
--------------------------	-------------------------------	--------------------------------	-------------------------	----------------

<b>Lieferumfang:</b> 2 Positionierringe 2 Schrauben M6x20	<b>Matériel livré:</b> 2 Bagues de positionnement 2 Vis M6x20	<b>Ambito di fornitura:</b> 2 Anelli di posizionamento 2 Viti M6x20	<b>Items supplied:</b> 2 Positioning rings 2 Screws M6x20
---	---	---	---



### Flansch (Stahl)

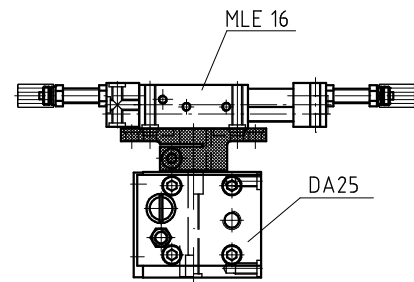
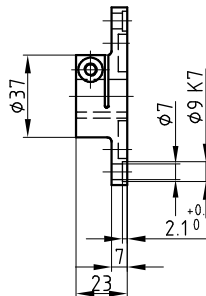
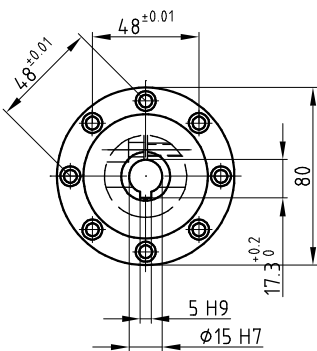
### Bride (Acier)

### Flangia (Acciaio)

### Flange (Steel)

4000058

<b>Lieferumfang:</b> 2 Positionierringe 4 Schrauben M6x30	<b>Matériel livré:</b> 2 Bagues de positionnement 4 Vis M6x30	<b>Ambito di fornitura:</b> 2 Anelli di posizionamento 4 Viti M6x30	<b>Items supplied:</b> 2 Positioning rings 4 Screws M6x30
---	---	---	---



### Zylinderschraube

### Vis à tête cylindrique

### Vite a testa cilindrica

### Cylindrical screw

4000055

