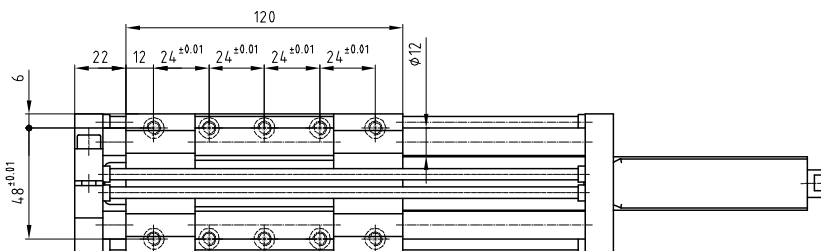
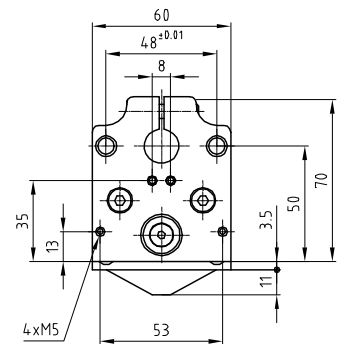
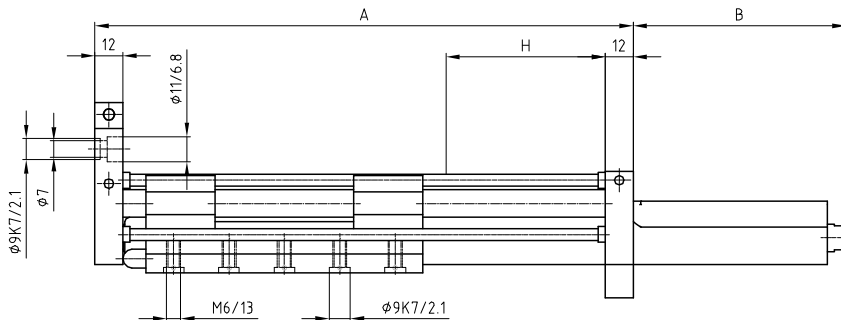
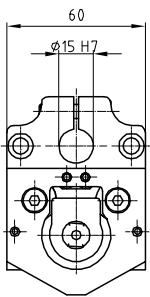
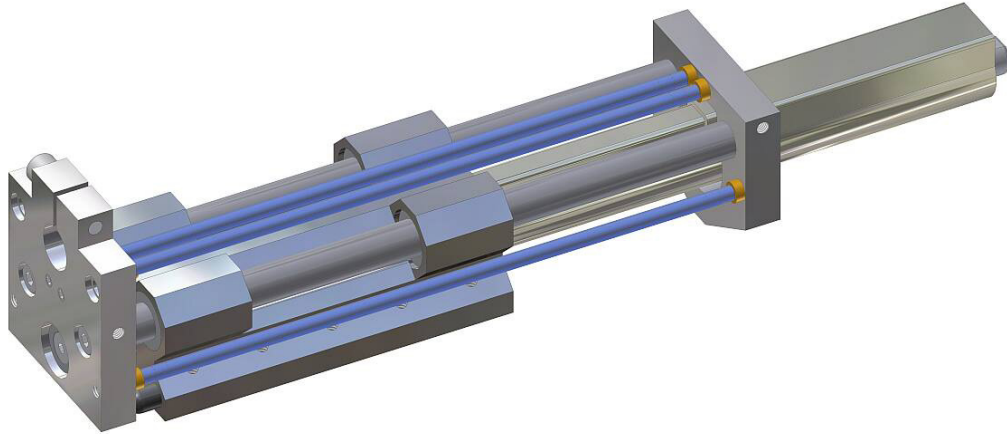
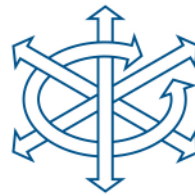


Linearmotor-Element LME 23    Élément avec moteur électrique linéaire LME 23    Unita' con motore lineare LME 23    Element with linear motor LME 23



Typ	Type	Tipo	Typ	LME 23x160-70	LME 23x160-130
Artikelnummer	No d'article	Codice No.	Reference No.	5000001	5000002
Nennhub H	Course H	Corsa H	Stroke H	70 mm	130 mm
Mass A	Dimension A	Dimensione A	Dimension A	233 mm	294 mm
Mass B	Dimension B	Dimensione B	Dimension B	73 mm	72 mm



# HELD

## AUTOMATION

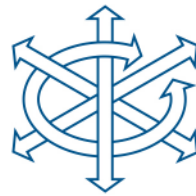
### Technische Daten

### Données techniques

### Dati tecnici

### Technical data

Typ	Type	Tipo	Type	LME 23x160-70			LME 23x160-130		
Artikelnummer	No d'article	Codice No.	Reference No.	5000001			5000002		
Nennhub H	Course H	Corsa H	Stroke H	70 mm			130 mm		
Max. Nutzgewicht	Charge utile max.	Carico utile max.	Max. useful load	6 kg			4 Kg		
Servo Controller	Servo contrôleur	Regolatore servo	Servo Controller	Serie 100		Serie 1000	Serie 100		Serie 1000
Speisung	Alimentation	Alimentazione	Supply	24 V	48 V	72 V	24 V	48 V	72 V
* Max. Geschwindigkeit	* Vitesse max.	* Max. velocità	* Max. velocity	1.2 m/s	2.4 m/s	3.4 m/s	1.2 m/s	2.4 m/s	3.4 m/s
* Max. Beschleunigung	* Accélération max.	* Max. accelerazione	* Max. acceleration	100 m/s <sup>2</sup>	201 m/s <sup>2</sup>	272 m/s <sup>2</sup>	82 m/s <sup>2</sup>	163 m/s <sup>2</sup>	221 m/s <sup>2</sup>
Spitzenkraft	Force max.	Forza massima	Peak force	22 N	44 N	60 N	22 N	44 N	60 N
Kontinuierliche Kraft	Force continue	Forza continuabile	Continuous force	17 N	17 N	17 N	17 N	17 N	17 N
Max. Handhabungsgewicht	Charge mobile max.	Max. carico mobile	Max. movable load	*	*	*	*	*	*
Phasenstrom	Tension simple	Corrente di fase	Phase voltage	1.0 A	2.0 A	2.8 A	1.0 A	2.0 A	2.8 A
Kraftkonstante	Constante de force	Forza costante	Force constant	22 N/A			22 N/A		
Dry Friction	Dry friction	Dry friction	Dry friction	10 N			10 N		
Temperaturbereich	Ecart de température	Gamma di temperatura	Temperature range	-10°/+60°C			-10°/+60°C		
Gesamtgewicht	Poids	Peso	Weight	1.70 Kg			1.80 Kg		
Bewegte Masse	Masse mobile	Massa mobile	Moving mass	0.80 Kg			1.00 Kg		
Wiederholgenauigkeit	Reproductibilité	Ripetibilità	Repeating accuracy	± 0.05 mm			± 0.05 mm		
Einbaulage (beliebig)	Position de montage (à volonté)	Posizione di montaggio (a volontà)	Any given position (any)						



### Zubehör LME 23

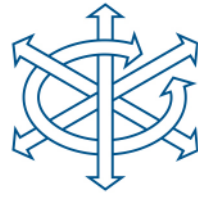
### Accessoires LME 23

### Accessori LME 23

### Accessory LME 23

Lastkompensation	Compensation de charge	Compensazione carico	Load compensation	LME 23x160-70	LME 23x160-130
Artikelnummer	No d'article	Codice No.	Reference No.	4000117	4000118
Mass A	Dimension A	Dimensione A	Dimension A	149 mm	213 mm
Mass B	Dimension B	Dimensione B	Dimension B	15 mm	79 mm
Gewicht	Poids	Peso	Weight	0.140 Kg	0.155 Kg

Lieferumfang:	Matériel livré:	Ambito di fornitura:	Items supplied:
2 Positionerringe	2 Bagues de positionnement	2 Anelli di posizionamento	2 Positioning rings



**HELD**  
AUTOMATION

