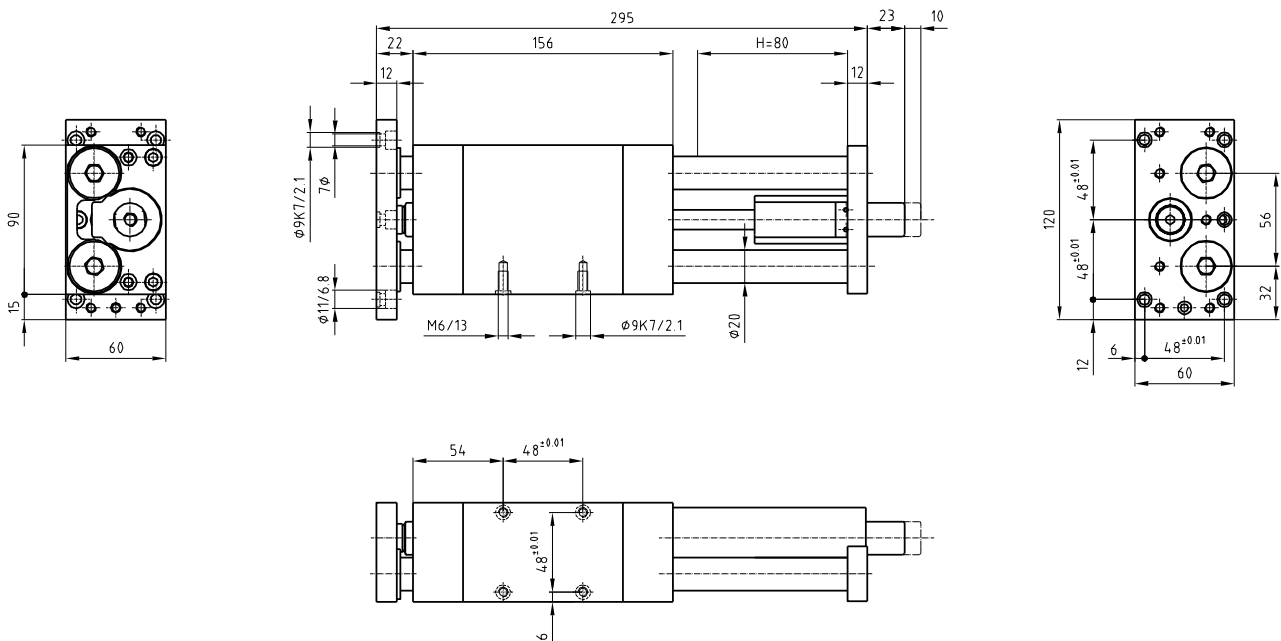
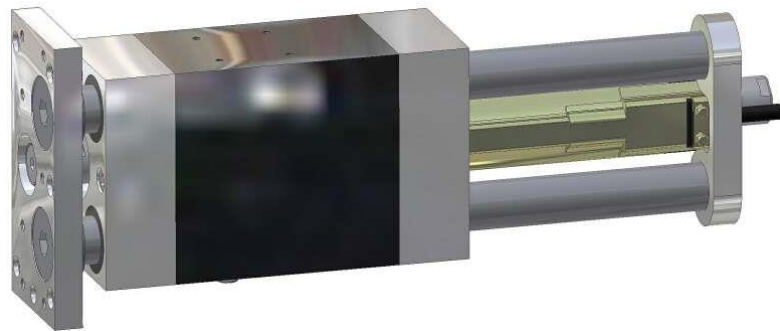


Linearmotor-Element LME 37 Élément avec moteur électrique linéaire LME 37 Unità con motore lineare LME 37 Element with linear motor LME 37



Typ	Type	Tipo	Typ	LME 37x120-80
Artikelnummer	No d'article	Codice No.	Reference No.	5000003
Nennhub H	Course H	Corsa H	Stroke H	80 mm

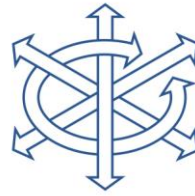
Technische Daten
Données techniques
Dati tecnici
Technical data

Typ	Type	Tipo	Type	LME 37x120-80
Artikelnummer	No d'article	Codice No.	Reference No.	5000003
Nennhub H	Course H	Corsa H	Stroke H	80 mm
Max. Nutzgewicht	Charge utile max.	Carico utile max.	Max. useful load	10 Kg
Servo Controller	Servo contrôleur	Regolatore servo	Servo controller	LinMot
Speisung	Alimentation	Alimentazione	Supply	72VDC
* Max. Geschwindigkeit	* Vitesse max.	* Max. velocità	* Max. velocity	*
* Max. Beschleunigung	* Accélération max.	* Max. accelerazione	* Max. acceleration	*m/s ²
Spitzenkraft	Force max.	Forza massima	Peak force	163N
Kontinuierliche Kraft	Force continue	Forza continuabile	Continuous force	28/52N
Max. Handhabungsgewicht	Charge mobile max.	Max. carico mobile	Max. movable load	*
Phasenstrom	Tension simple	Corrente de fase	Phase voltage	*
Kraftkonstante	Constante de force	Forza costante	Force constant	20 N/A
Dry Friction	Dry friction	Dry friction	Dry friction	10 N
Temperaturbereich	Ecart de température	Gamma di temperatura	Temperature range	-10°/ +60°C
Gesamtgewicht	Poids	Peso	Weight	3.90 Kg
Bewegte Masse	Masse mobile	Massa mobile	Moving mass	1.80 Kg
Wiederholgenauigkeit	Reproductibilité	Ripetibilità	Repeating accuracy	± 0.05 mm
Einbaulage (beliebig)	Position de montage (à volonté)	Posizione di montaggio (a volontà)	Any given position (any)	

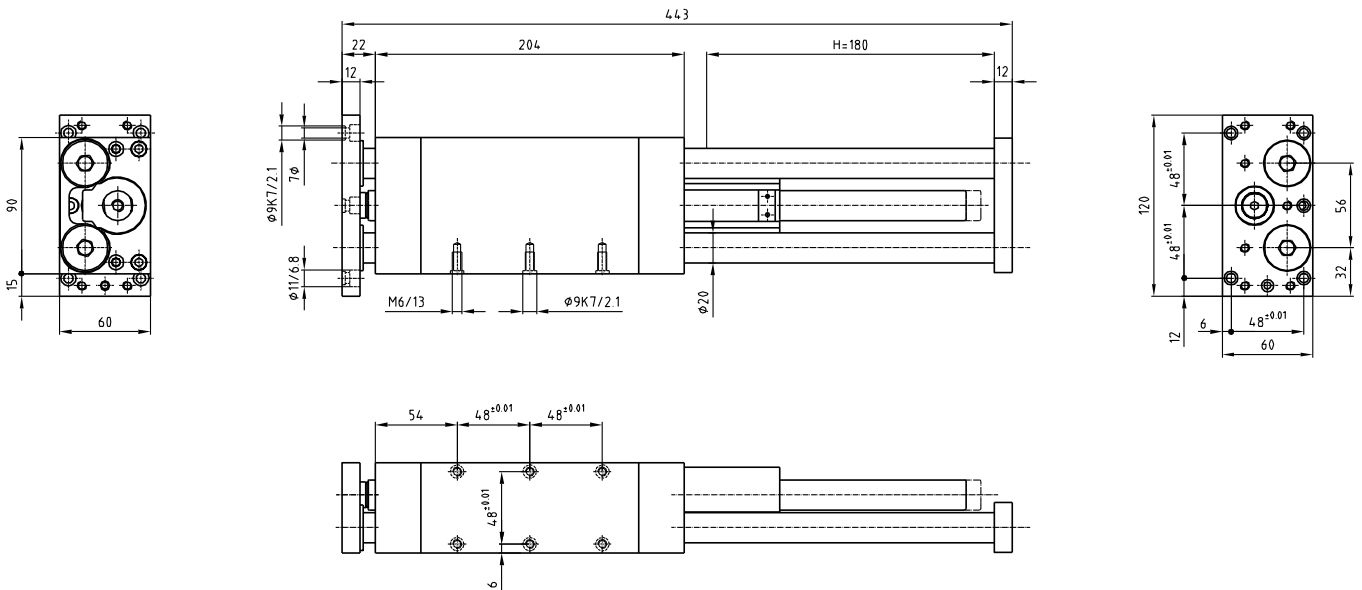
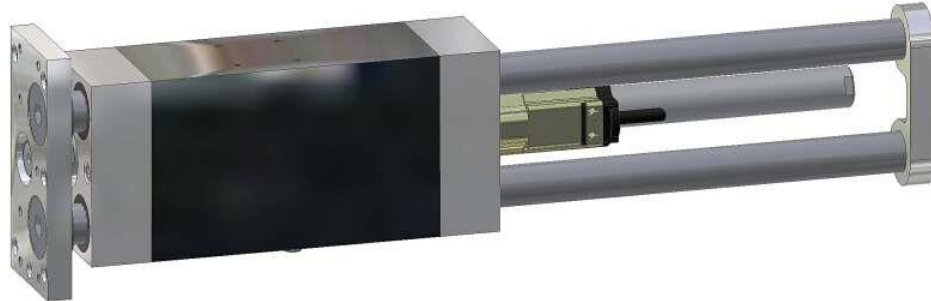
* abhängig zu Bewegungsprofil (theoretische Motorendaten)
 * dipendente del profilo di movimento

* en fonction des fichiers de mouvement
 * in dependence of the activity file

Linearmotor-Element LME 37 Élément avec moteur électrique linéaire LME 37 Unità con motore lineare LME 37 Element with linear motor LME 37



HELD
AUTOMATION



Typ	Type	Tipo	Typ	LME 37x120-180
Artikelnummer	No d'article	Codice No.	Reference No.	5000004
Nennhub H	Course H	Corsa H	Stroke H	180 mm

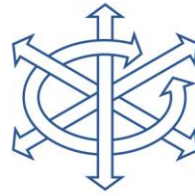
Technische Daten
Données techniques
Dati tecnici
Technical data

Typ	Type	Tipo	Type	LME 37x120-180
Artikelnummer	No d'article	Codice No.	Reference No.	5000004
Nennhub H	Course H	Corsa H	Stroke H	180 mm
Max. Nutzgewicht	Charge utile max.	Carico utile max.	Max. useful load	9 Kg
Servo Controller	Servo contrôleur	Regolatore servo	Servo controller	
Speisung	Alimentation	Alimentazione	Supply	72 V
* Max. Geschwindigkeit	* Vitesse max.	* Max. velocità	* Max. velocity	*
* Max. Beschleunigung	* Accélération max.	* Max. accelerazione	* Max. acceleration	*
Spitzenkraft	Force max.	Forza massima	Peak force	163 N
Kontinuierliche Kraft	Force continue	Forza continuabile	Continuous force	28/52N
Max. Handhabungsgewicht	Charge mobile max.	Max. carico mobile	Max. movable load	*
Phasenstrom	Tension simple	Corrente di fase	Phase voltage	*
Kraftkonstante	Constante de force	Forza costante	Force constant	20 N/A
Dry Friction	Dry friction	Dry friction	Dry friction	10 N
Temperaturbereich	Ecart de température	Gamma di temperatura	Temperature range	-10°/ +60°C
Gesamtgewicht	Poids	Peso	Weight	4.90 Kg
Bewegte Masse	Masse mobile	Massa mobile	Moving mass	2.30 Kg
Wiederholgenauigkeit	Reproductibilité	Ripetibilità	Repeating accuracy	± 0.05 mm
Einbaulage (beliebig)	Position de montage (à volonté)	Posizione di montaggio (a volontà)	Any given position (any)	

* abhängig zu Bewegungsprofil (theoretische Motorendaten)
* dipendente del profilo di movimento

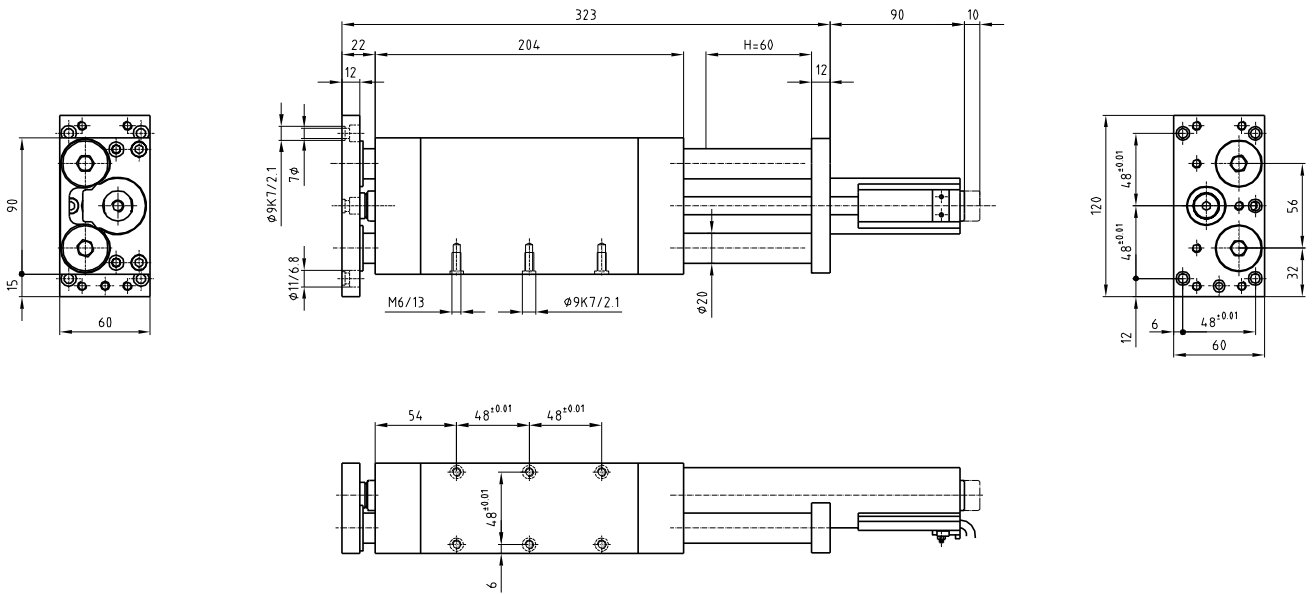
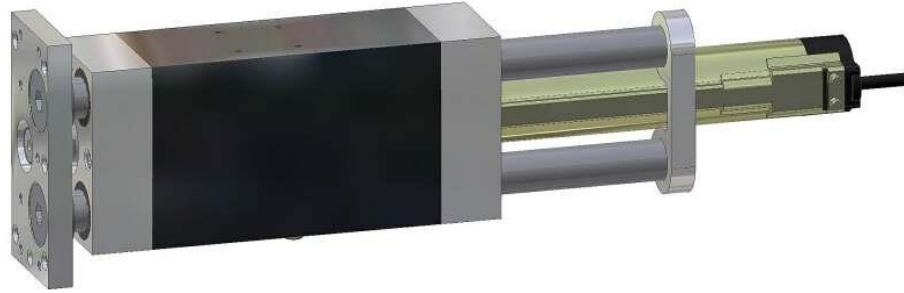
* en fonction des fichiers de mouvement
* in dependence of the activity file

Linearmotor-Element LME 37 Élément avec moteur électrique linéaire LME 37 Unità con motore lineare LME 37 Element with linear motor LME 37



HELD

AUTOMATION



Typ	Type	Tipo	Typ	LME 37x240-60
Artikelnummer	No d'article	Codice No.	Reference No.	5000005
Nennhub H	Course H	Corsa H	Stroke H	60 mm

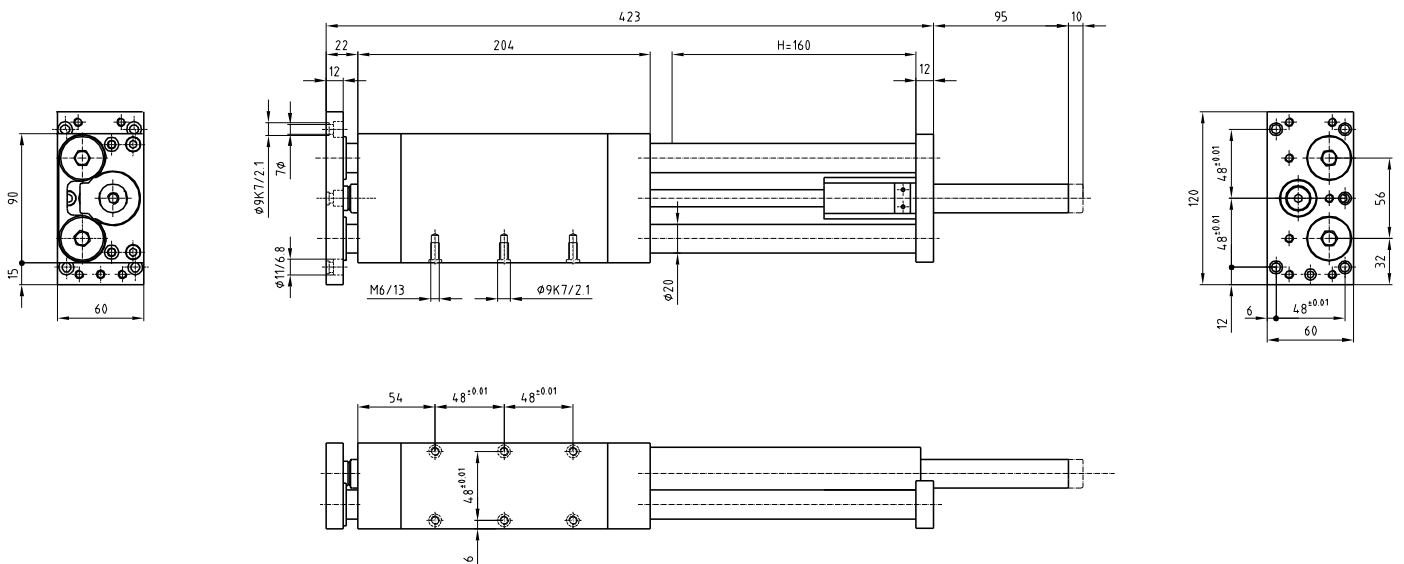
Technische Daten
Données techniques
Dati tecnici
Technical data

Typ	Type	Tipo	Type	LME 37x240-60
Artikelnummer	No d'article	Codice No.	Reference No.	5000005
Nennhub H	Course H	Corsa H	Stroke H	60 mm
Max. Nutzgewicht	Charge utile max.	Carico utile max.	Max. useful load	10 Kg
Servo Controller	Servo contrôleur	Regolatore servo	Servo controller	LinMot
Speisung	Alimentation	Alimentazione	Supply	72 V
* Max. Geschwindigkeit	* Vitesse max.	* Max. velocità	* Max. velocity	*
* Max. Beschleunigung	* Accélération max.	* Max. accelerazione	* Max. acceleration	*
Spitzenkraft	Force max.	Forza massima	Peak force	203N
Kontinuierliche Kraft	Force continue	Forza continuabile	Continuous force	52/96N
Max. Handhabungsgewicht	Charge mobile max.	Max. carico mobile	Max. movable load	*
Phasenstrom	Tension simple	Corrente di fase	Phase voltage	*
Kraftkonstante	Constante de force	Forza costante	Force constant	40 N/A
Dry Friction	Frottement sec	Attrito asciutto	Dry friction	10 N
Temperaturbereich	Ecart de température	Gamma di temperatura	Temperature range	-10°/ +60°C
Gesamtgewicht	Poids	Peso	Weight	5.30 Kg
Bewegte Masse	Masse mobile	Massa mobile	Moving mass	2.10 Kg
Wiederholgenauigkeit	Reproductibilité	Ripetibilità	Repeating accuracy	± 0.05 mm
Einbaulage (beliebig)	Position de montage (à volonté)	Posizione di montaggio (a volontà)	Any given position (any)	

* abhängig zu Bewegungsprofil (theoretische Motorendaten)
 * dipendente del profilo di movimento

* en fonction des fichiers de mouvement
 * in dependence of the activity file

Linearmotor-Element LME 37 Élément avec moteur électrique linéaire LME 37 Unità con motore lineare LME 37 Element with linear motor LME 37



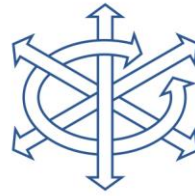
Typ	Type	Tipo	Typ	LME 37x240-160
Artikelnummer	No d'article	Codice No.	Reference No.	5000006
Nennhub H	Course H	Corsa H	Stroke H	160 mm

Technische Daten
Données techniques
Dati tecnici
Technical data

Typ	Type	Tipo	Type	LME 37x240-160
Artikelnummer	No d'article	Codice No.	Reference No.	5000006
Nennhub H	Course H	Corsa H	Stroke H	160 mm
Max. Nutzgewicht	Charge utile max.	Carico utile max.	Max. useful load	9 Kg
Servo Controller	Servo contrôleur	Regolatore servo	Servo controller	LinMot
Speisung	Alimentation	Alimentazione	Supply	72 V
* Max. Geschwindigkeit	* Vitesse max.	* Max. velocità	* Max. velocity	*
* Max. Beschleunigung	* Accélération max.	* Max. accelerazione	* Max. acceleration	*
Spitzenkraft	Force max.	Forza massima	Peak force	203N
Kontinuierliche Kraft	Force continue	Forza continuabile	Continuous force	52/96N
Max. Handhabungsgewicht	Charge mobile max.	Max. carico mobile	Max. movable load	*
Phasenstrom	Tension simple	Corrente di fase	Phase voltage	*
Kraftkonstante	Constante de force	Forza costante	Force constant	40 N/A
Dry Friction	Dry friction	Dry friction	Dry friction	10 N
Temperaturbereich	Ecart de température	Gamma di temperatura	Temperature range	-10°/ +60°C
Gesamtgewicht	Poids	Peso	Weight	5.80 Kg
Bewegte Masse	Masse mobile	Massa mobile	Moving mass	2.60 Kg
Wiederholgenauigkeit	Reproductibilité	Ripetibilità	Repeating accuracy	± 0.05 mm
Einbaulage (beliebig)	Position de montage (à volonté)	Posizione di montaggio (a volontà)	Any given position (any)	

* abhängig zu Bewegungsprofil (theoretische Motorendaten)
 * dipendente del profilo di movimento

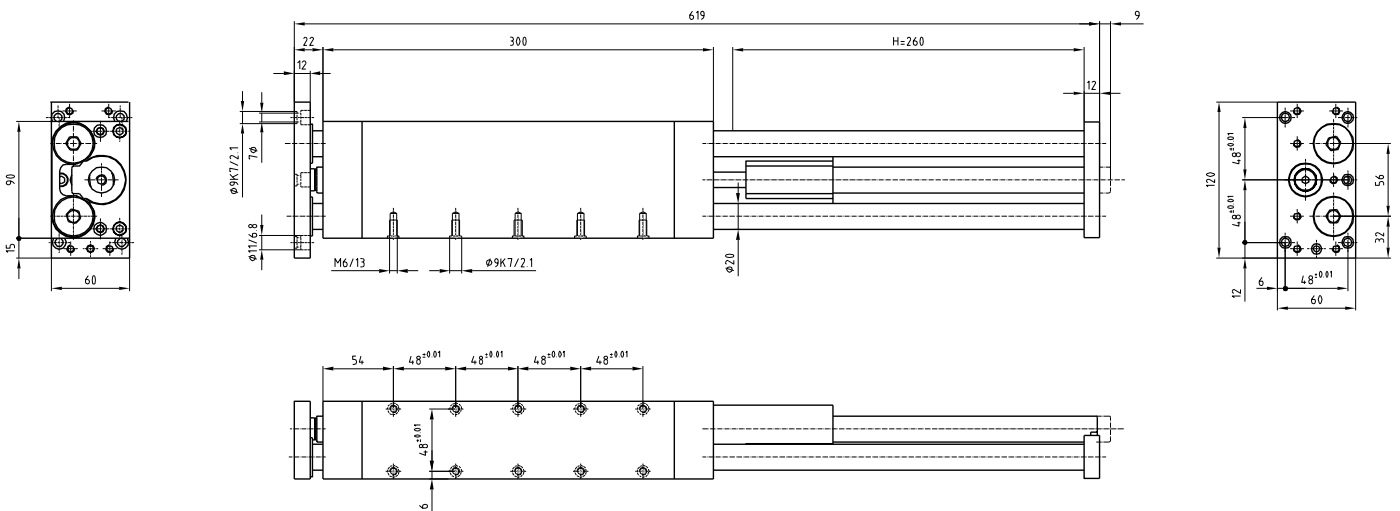
* en fonction des fichiers de mouvement
 * in dependence of the activity file



HELD

AUTOMATION

Linearmotor-Element LME 37 Élément avec moteur électrique linéaire LME 37 Unità con motore lineare LME 37 Element with linear motor LME 37



Typ	Type	Tipo	Typ	LME 37x240-260
Artikelnummer	No d'article	Codice No.	Reference No.	5000007
Nennhub H	Course H	Corsa H	Stroke H	260 mm

Technische Daten
Données techniques
Dati tecnici
Technical data

Typ	Type	Tipo	Type	LME 37x240-260
Artikelnummer	No d'article	Codice No.	Reference No.	5000007
Nennhub H	Course H	Corsa H	Stroke H	260 mm
Max. Nutzgewicht	Charge utile max.	Carico utile max.	Max. useful load	7 Kg
Servo Controller	Servo contrôleur	Regolatore servo	Servo controller	LinMot
Speisung	Alimentation	Alimentazione	Supply	72 V
* Max. Geschwindigkeit	* Vitesse max.	* Max. velocità	* Max. velocity	*
* Max. Beschleunigung	* Accélération max.	* Max. accelerazione	* Max. acceleration	*
Spitzenkraft	Force max.	Forza massima	Peak force	203N
Kontinuierliche Kraft	Force continue	Forza continuabile	Continuous force	52/96N
Max. Handhabungsgewicht	Charge mobile max.	Max. carico mobile	Max. movable load	*
Phasenstrom	Tension simple	Corrente di fase	Phase voltage	*
Kraftkonstante	Constante de force	Forza costante	Force constant	40 N/A
Dry Friction	Dry friction	Dry friction	Dry friction	10 N
Temperaturbereich	Ecart de température	Gamma di temperatura	Temperature range	-10°/ +60°C
Gesamtgewicht	Poids	Peso	Weight	7.30 Kg
Bewegte Masse	Masse mobile	Massa mobile	Moving mass	3.30 Kg
Wiederholgenauigkeit	Reproductibilité	Ripetibilità	Repeating accuracy	± 0.05 mm
Einbaulage (beliebig)	Position de montage (à volonté)	Posizione di montaggio (a volontà)	Any given position (any)	

* abhängig zu Bewegungsprofil (theoretische Motorendaten)
 * dipendente del profilo di movimento

* en fonction des fichiers de mouvement
 * in dependence of the activity file