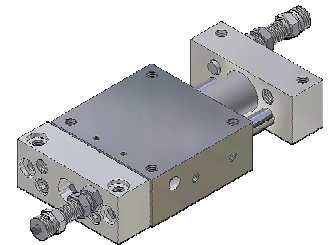
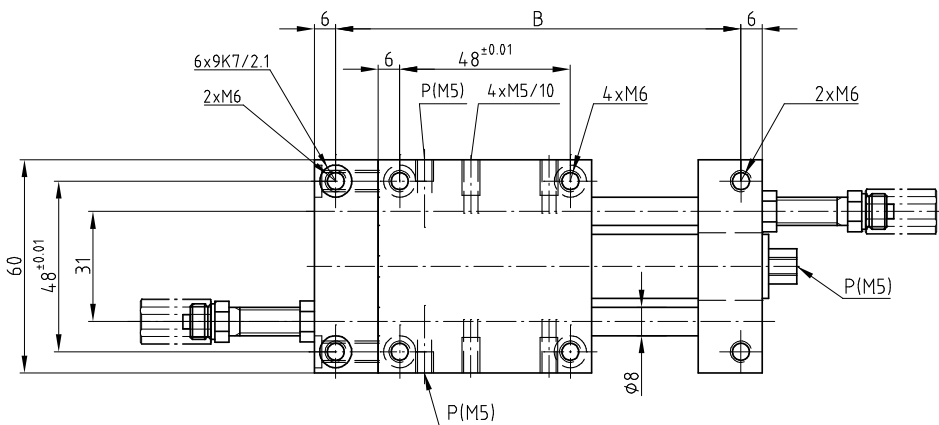
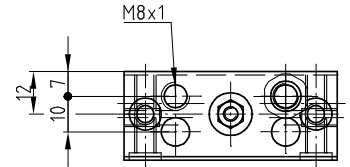
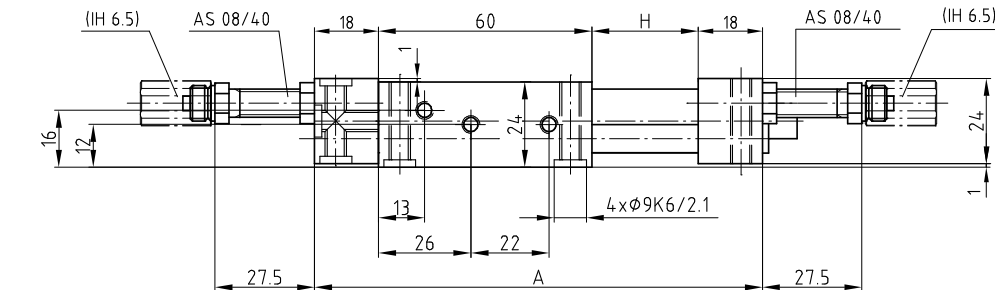


### Linear-Element MLE 16

### Élément linéaire MLE 16

### Unità lineare MLE 16

### Linear element MLE 16



P=Luftanschluss M5

P=Raccord d'air M5

P=Raccordi pneumatici M5

P=Air connections M5

Typ	Type	MLE 16-25	MLE 16-50	MLE 16-75	MLE 16-100
Tipo	Type				
Artikelnummer	No d'article	1000013	1000014	1000015	1000016
Codice No.	Reference No.				
Nennhub H	Course H	25 mm	50 mm	75 mm	100 mm
Corsa H	Stroke H				
Mass A	Dimension A	121 mm	146 mm	171 mm	196 mm
Dimensione A	Dimension A				
Mass B	Dimension B	109 mm	134 mm	159 mm	184 mm
Dimensione B	Dimension B				

Sonderausführungen auf Anfrage

Constructions particulières sur demande

Esecuzioni speciali su richiesta

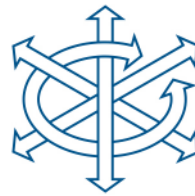
Special types on request

Zubehör finden Sie auf den Seiten 2.13, 2.14, 6.1

Vous trouvez des accessoires aux pages 2.13, 2.14, 6.1

Per gli accessori, vedi alle pagine 2.13, 2.14, 6.1

You will find accessories on pages 2.13, 2.14, 6.1



### Technische Daten

### Données techniques

### Dati tecnici

### Technical data

Typ Tipo	Type Type	MLE 16-25	MLE 16-50	MLE 16-75	MLE 16-100
Artikelnummer Codice No.	No d'article Reference No.	1000013	1000014	1000015	1000016
Nennhub H Corsa H	Course H Stroke H	25 mm	50 mm	75 mm	100 mm
Max. Nutzgewicht=m Carico utile max.=m	Charge utile max.=m Max. useful load=m	1.5 kg	1.5 kg	1.0 kg	1.0 kg
Kolbenkraft einfahrend Forza di rientro	Force du piston rentrant Piston force retracted	78 N (5 bar)	78 N (5 bar)	78 N (5 bar)	78 N (5 bar)
Kolbenkraft ausfahrend Forza di uscita	Force du piston sortant Piston force extened	90 N (5 bar)	90 N (5 bar)	90 N (5 bar)	90 N (5 bar)
Betriebsdruck Pressione aria	Pression d'air Working pressure	3 – 8 bar	3 – 8 bar	3 – 8 bar	3 – 8 bar
Luftanschlüsse (P) Raccordi pneumatici (P)	Raccords d'air (P) Air connectors (P)	M5	M5	M5	M5
Luftverbrauch/Hub Consumo aria/corsa	Consummation d'air/course Air consumption/stroke	0.025 NL	0.050 NL	0.075 NL	0.100 NL
Temperaturbereich Gamma di temperatura	Ecart de température Temperature range	-10°/+60°C	-10°/+60°C	-10°/+60°C	-10°/+60°C
Gewicht Peso	Poids Weight	0.49 kg	0.53 kg	0.57 kg	0.61 kg
Wiederholgenauigkeit Ripetibilità	Reproductibilité Repeating accuracy	±0.01 mm	±0.01 mm	±0.01 mm	±0.01 mm
Einbaulage (beliebig) Posizione di montaggio (a volontà)	Position de montage (à volonté) Any given position (any)				

### Lieferumfang:

2 Anschlagschr. AS 08/40  
2 Positionierringe

### Matériel livré:

2 Vis d'arrêt AS 08/40  
2 Bagues de positionnement

### Ambito di fornitura:

2 Viti d'arresto AS 08/40  
2 Anelli di posizionamento

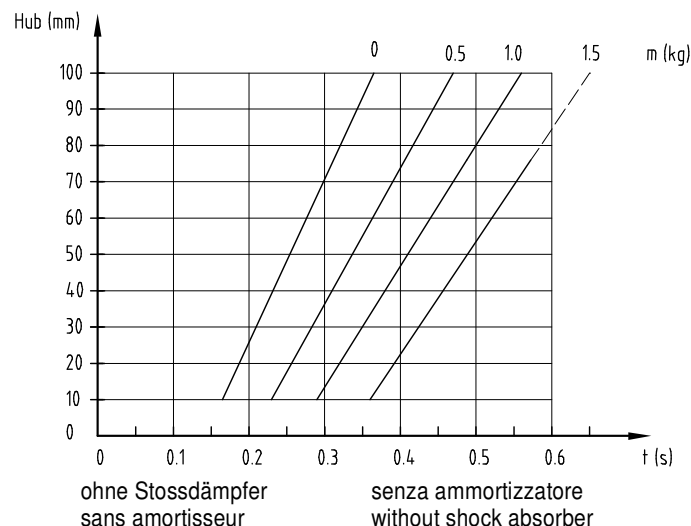
### Items supplied:

2 Stop screws AS 08/40  
2 Positioning rings

### Taktzeit

Messungen bei 5 bar

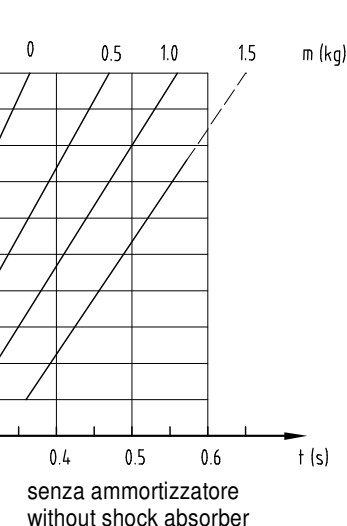
m=Masse [kg]  
t = Hubzeit [s]



### Temps de cycle

Mesuré à 5 bar

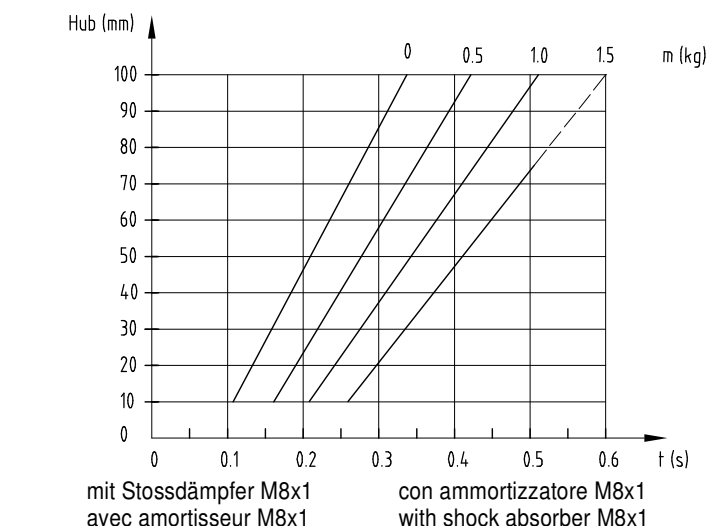
m=Masse [kg]  
t = Temps par course [s]



### Tempo di ciclo

Misurato con 5 bar

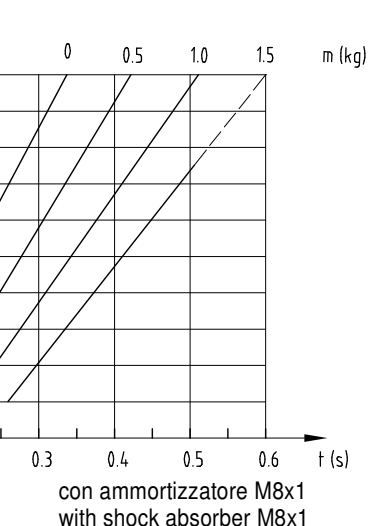
m=Massa [kg]  
t = Tempo di corsa [s]

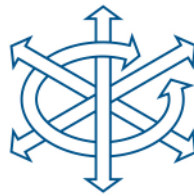


### Cycle time

Measurements at 5 bar

m=Mass [kg]  
t = Stroke time [s]





## Zubehör MLE 16

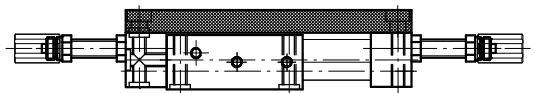
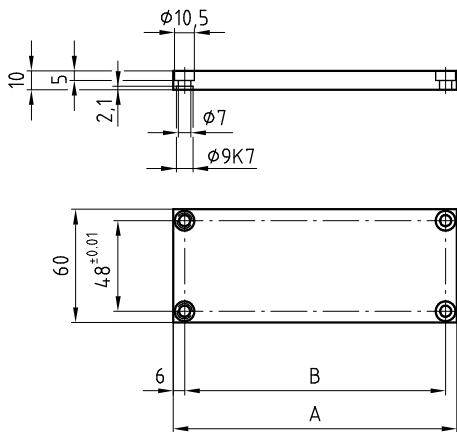
## Accessoires MLE 16

## Accessori MLE 16

## Accessory MLE 16

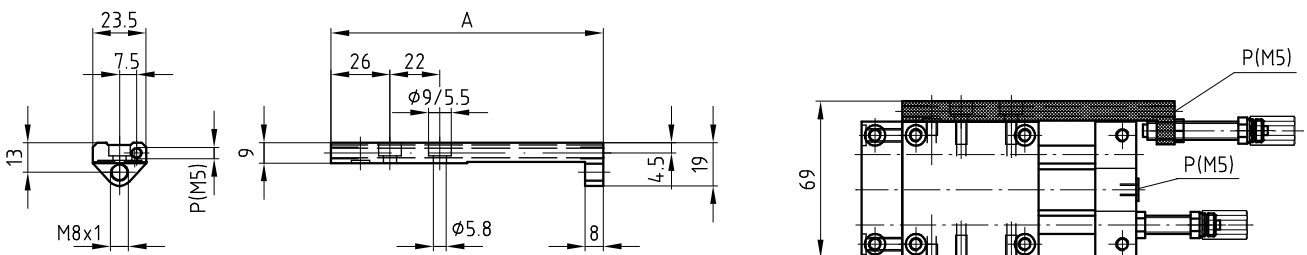
Montageplatte	Plaque de montage	Piastra di montaggio	Connecting plate	MLE 16-25	MLE 16-50	MLE 16-75	MLE 16-100
Artikelnummer	No d'article	Codice No.	Reference No.	4000014	4000015	4000016	4000017
Mass A	Dimension A	Dimensione A	Dimension A	121 mm	146 mm	171 mm	196 mm
Mass B	Dimension B	Dimensione B	Dimension B	109 mm	134 mm	159 mm	184 mm
Gewicht	Poids	Peso	Weight	0.20 kg	0.24 kg	0.28 kg	0.32 kg

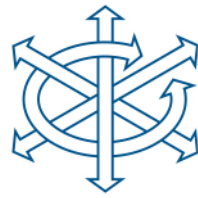
Lieferumfang:	Matériel livré:	Ambito di fornitura:	Items supplied:
2 Positionerringe	2 Bagues de positionnement	2 Anelli di posizionamento	2 Positioning rings
4 Schrauben M6x12	4 Vis M6x12	4 Viti M6x12	4 Screws M6x12



Anschlagwinkel	Butée d'angle	Angolo di arresto	Stop L-bar	MLE 16-25	MLE 16-50	MLE 16-75	MLE 16-100
Artikelnummer	No d'article	Codice No.	Reference No.	4000007	4000008	4000009	4000010
Mass A	Dimension A	Dimensione A	Dimension A	115 mm	140 mm	165 mm	190 mm
Gewicht	Poids	Peso	Weight	0.070 kg	0.085 kg	0.10 kg	0.115 kg

Lieferumfang:	Matériel livré:	Ambito di fornitura:	Items supplied:
2 Schrauben M5x12	2 Vis M5x12	2 Viti M5x12	2 Screws M5x12
1 O-Ring 12x1.5	1 Joint torique 12x1.5	1 Anello toroidale 12x1.5	1 O-ring 12x1.5





## Zubehör MLE 16

## Accessoires MLE 16

## Accessori MLE 16

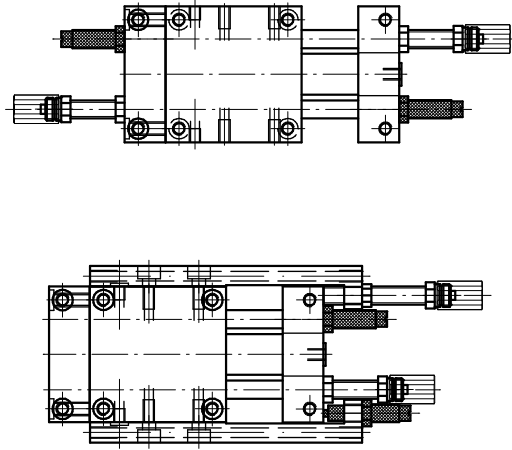
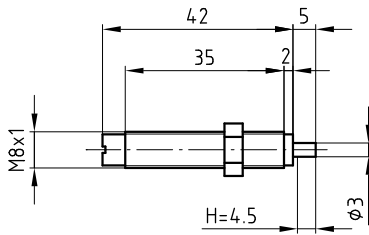
## Accessory MLE 16

Stossdämpfer SD 08

Amortisseur SD 08

Ammortizzatore SD 08

Shock absorber SD 08 80600001



Technische Daten ( S.1.12, 6.1)

Données techniques ( S.1.12, 6.1)

Dati tecnici ( S.1.12, 6.1)

Technical data ( S.1.12, 6.1)